

# Platforms

## “U” Platform

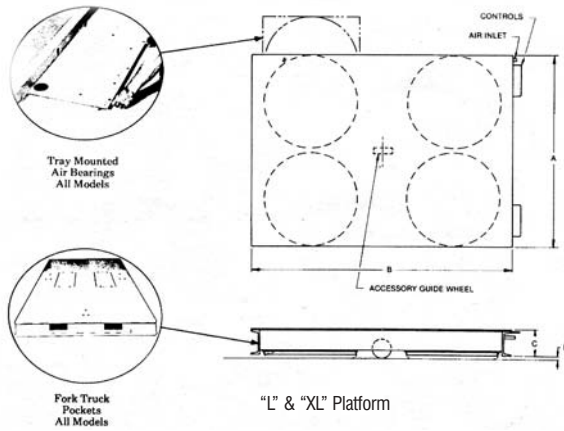
Rated Capacity Lbs (kg)	4000 (1815 kg)	6000 (2725 kg)	8000 (3630 kg)	8000 (3630 kg)
Model Number	AID-U3030	AID-U3636	AID-U4242	AID-U4848
A—Width:	30" (76 cm)	36" (91 cm)	42" (106 cm)	48" (122 cm)
B—Length:	30" (76 cm)	36" (91 cm)	42" (106 cm)	48" (122 cm)
C—Height, Air Off:	3" (7.62 cm)	3" (7.62 cm)	3" (7.62 cm)	3" (7.62 cm)
D—Lift, Air On:	3/8" (.95 cm)	1/2" (1.3 cm)	3/4" (1.9 cm)	3/4" (1.9 cm)
Air Bearing Diameter:	14" (35 cm)	17" (43 cm)	20" (51 cm)	20" (51 cm)
Number Air Bearings:	4	4	4	4
Press, at Rated Loads—PSI (Bar)	8 (.54)	8 (.54)	8 (.54)	8 (.54)
Total Platform Weight—Lbs (kg)	125 (57kg)	185 (84 kg)	235 (107 kg)	260 (118 kg)
Price:	\$1,389.00	\$1,539.00	\$1,823.00	\$1,939.00



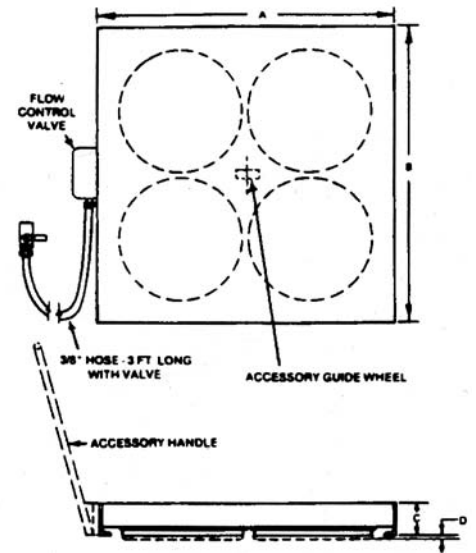
“U” Platform

### Accessories

Accessory	Model Number	Weight (lbs)	Price
Operator Handle	AID-U-OH	18	\$250.00
Center Guide Wheel Options			
1. Spring Loaded	AID-U-GW	9	\$167.00
2. Retractable	AID-U-RGW	16	\$525.00



“L” & “XL” Platform



## “L” & “XL” Platform

Model Number	Capacity	MINIMUM DIMENSIONS				Weight (Approx.)	AIR BEARINGS			Price	
		A	B	C	D		Model	No. Req'd	Lift Area		
AID-L-20	20,000 lbs 9,072 kg	48"	56"	5 1/2"	1/2" to 3/4"	520 lbs	AID-H0020	4	920 sq in	50-70	\$4,434.00
AID-L-30	30,000 lbs 13,608 kg	49"	64"	5 1/2"	1/2" to 3/4"	236 kg	AID-H0024	4	5,963 cm <sup>2</sup>	1.41-2.12	\$4,723.00
	120,000 lbs 54,431 kg	122 cm	142 cm	13.3 cm	1.27 to 1.58 cm	236 kg			1,400 sq in	70-100	
AID-L-50	50,000 lbs 22,680 kg	61"	76"	5 1/2"	3/8" to 1"	290 kg	AID-H0030	4	9,033 cm <sup>2</sup>	1.98-2.83	\$6,878.00
	120,000 lbs 54,431 kg	124 cm	163 cm	13.3 cm	1.27 to 1.90 cm	290 kg			2,300 sq in	80-100	
AID-XL-80	80,000 lbs 36,287 kg	73"	92"	6 1/2"	to 1"	1,320 lbs	AID-H0036	4	4,800 sq in	120-140	\$14,445.00
	120,000 lbs 54,431 kg	221 cm	279 cm	16.2 cm	to 3.17 cm	1,021 kg			21,937 cm <sup>2</sup>	3.40-3.96	
AID-XL-120	120,000 lbs 54,431 kg	87"	110"	6 3/8"	to 1 1/4"	2,250 lbs	AID-H0043	4	4,800 sq in	120-140	\$19,445.00
	150,000 lbs 68,039 kg	221 cm	279 cm	16.2 cm	to 3.17 cm	1,021 kg			30,970 cm <sup>2</sup>	3.40-3.96	
AID-XL-150	150,000 lbs 68,039 kg	97"	120"	6 3/8"	to 1 1/4"	2,750 lbs	AID-H0048	4	6,000 sq in	160-200	\$23,334.00
	150,000 lbs 68,039 kg	246 cm	305 cm	16.2 cm	to 3.17 cm	1,247 kg			38,712 cm <sup>2</sup>	4.53-5.66	

\*Figures shown are for flow in standard cu. ft. per minute, based on operation over a smooth surface, machine troweled concrete surface. Ideal surfaces such as smooth tile or steel plate may require less than half the flow shown.

### Debris Skirts

Model Number	L Platform Size	Weight	Price
AID-L-DS20	20	75 lbs (34 kg)	\$434.00
AID-L-DS30	30	82 lbs (37 kg)	\$563.00
AID-L-DS50	50	88 lbs (40kg)	\$748.00
AID-L-DS65	65	95 lbs (43 kg)	\$965.00
AID-L-DS80	80	99 lbs (45 kg)	\$1,036.00
AID-L-DS120	120	104 lbs (47 kg)	\$1,380.00
AID-L-DS150	150	120 lbs (54 kg)	\$2,006.00

\*Add \$195.00 for special sizes.

### Crane Bay Shuttles

Model Number	Capacity (tons)	Travel	Price
AID-CS-20	10	20 ft. (6.1 m)	\$17,050.00
AID-CS-40	20	20 ft. (6.1 m)	\$21,622.00
AID-CS-60	30	24 ft. (7.3 m)	\$30,280.00
AID-CS-100	50	30 ft. (9.1 m)	\$40,315.00

### Options

Guide Wheel		Weight (lbs)	Pendant Cil.		Weight (lbs)
Model	Price		Model	Price	
AID-1-L	\$576.00	15	AID-PC-1L	\$473.00	10
AID-1-L	\$576.00	15	AID-PC-2L	\$708.00	15
AID-1-ML	\$653.00	16	AID-PC-3L	\$795.00	20
AID-1-XL	\$997.00	48	AID-PC-1L	\$473.00	10
AID-2-XL	\$1,662.00	68	AID-PC-2L	\$708.00	15
AID-2-XL	\$1,662.00	68	AID-PC-3L	\$795.00	20