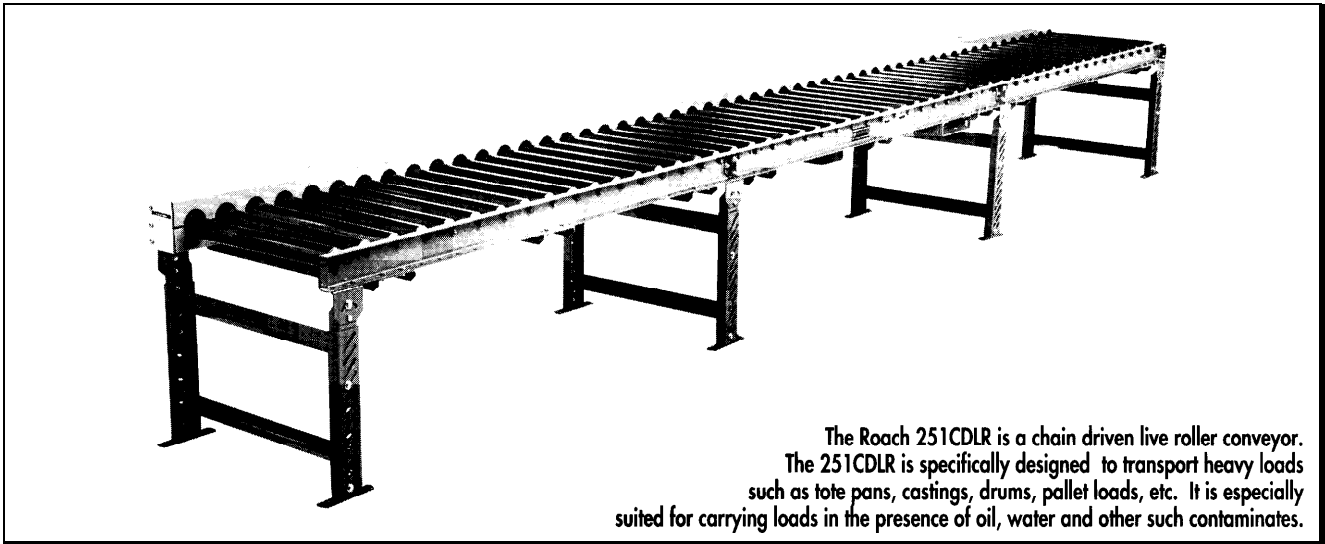


# MODEL 251CDLR HEAVY DUTY CHAIN DRIVEN LIVE ROLLER



The Roach 251CDLR is a chain driven live roller conveyor. The 251CDLR is specifically designed to transport heavy loads such as tote pans, castings, drums, pallet loads, etc. It is especially suited for carrying loads in the presence of oil, water and other such contaminants.

## SPECIFICATIONS

TREAD ROLLERS: 2-1/2" dia. x 11 ga.

CHAIN DRIVE: Roller to roller with No. 60 roller chain.

CENTER DRIVE: Reversible drive either side mounted or underside mounted (specify). Main drive roller is supported by precision, heavy duty, lubricated, ball bearing units.

CHAIN GUARD: The chain drive is completely enclosed along the entire length of the conveyor.

ROLLER CENTERS: 4-1/2", 6" or 12" available.

SPEED: 35 FPM, constant.

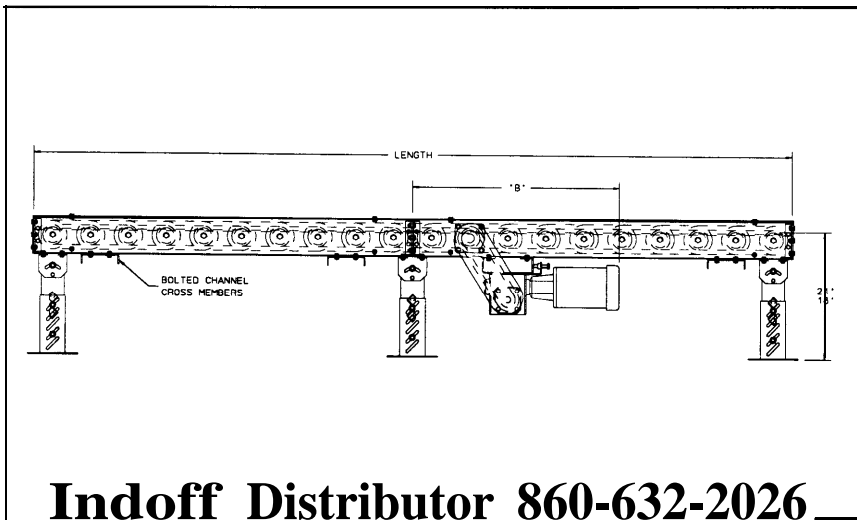
BEARINGS: Removable type, heavy duty ball bearings, zinc-plated, grease packed, labyrinth sealed.

BED: 6" x 1 1/2" x 7 ga. and 1-1/2" x 7 ga. formed steel channel frame. Bed sections attached with couplings and floor supports.

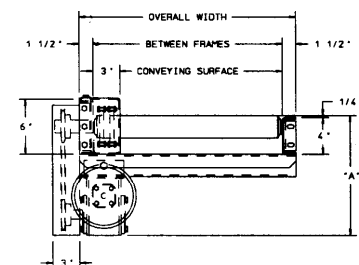
FLOOR SUPPORTS: Underside drive; SH-4, adjustable 18"-21" TOR. Side Mounted drive; SH-1, adjustable 10- 1/2"- 12" TOR.

MOTOR DRIVE: 3/4 HP, 230/460/3, 60 cycle, ODP right angle gear motor.

ELECTRICAL CONTROLS: Available as an option.



HP @ 35 FPM	REDUCER	" A "	" B "
3/4	RDW13340-02	13-1/8"	38-13/16"
1	RDW13150-01	14-3/4"	39-1/8"
1 - 1/2	RDW13150-02	14-3/4"	39-1/8"
2	RDW13200-02	16-1/8"	40-13/16"



**Indoff Distributor 860-632-2026**

4 week shipment

67

**SPECIFICATION TABLE**

CONVEYOR LENGTH		5'	10'	15'	20'	25'	30'	35'	40'	45'	50'	60'	70'	80'
CONV. SURFACE BF		Unit weights (lbs. with 6" roller) centers (For other centers deduct weights below)												
12"	15"	299	482	665	848	1031	1214	1397	1580	1763	1946	2312	2678	3044
18"	21"	324	527	730	933	1136	1339	1542	1745	1948	2151	2557	2963	3369
24"	27"	349	572	795	1018	1241	1464	1687	1910	2133	2356	2802	3248	3694
30"	33"	374	617	860	1103	1346	1589	1832	2075	2318	2561	3047	3533	4019
36"	39"	399	662	925	1188	1451	1714	1977	2240	2503	2766	3292	3818	4344
42"	45"	424	707	990	1273	1556	1839	2122	2405	2688	2971	3537	4103	4669
48"	51"	449	752	1055	1358	1661	1964	2267	2570	2873	3176	3782	4388	4994
54"	57"	474	797	1120	1443	1766	2089	2412	2735	3058	3381	4027	4673	5319
60"	63"	499	842	1185	1528	1871	2214	2557	2900	3243	3586	4272	4958	5644

Deduct the following weights (lbs.) for other than 6" centers

ROLLER CENTERS	15" BF		21" BF		27" BF		33" BF		39" BF		45" BF		51" BF		57" BF		63" BF	
	Per 5'	Per 10'	Per 5'	Per 10'	Per 5'	Per 10'	Per 5'	Per 10'	Per 5'	Per 10'	Per 5'	Per 10'	Per 5'	Per 10'	Per 5'	Per 10'	Per 5'	Per 10'
1 2"	-25	-50	-30	-60	-35	-70	-40	-80	-50	-100	-55	-110	-60	-120	-65	-130	-75	-150

**OPTIONAL EQUIPMENT**

**BED:** 4" x 5.4 lb. structural frames.

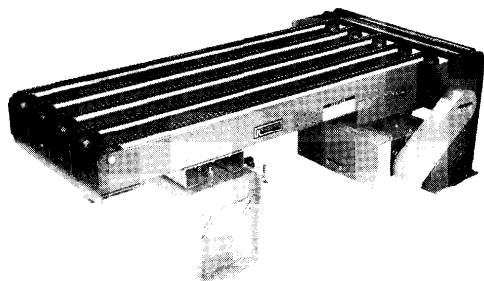
**SPEED:** Constant speed; 25-60 FPM (specify). Other constant or variable speeds available. **NOTE: CAPACITY CHANGES WITH SPEED.**

**MOTORS:** Available through 2 HP with characteristics such as totally enclosed, single phase, etc.

**FLOOR SUPPORTS:** Other height supports available, adjustable or fixed.

**ELECTRICAL CONTROLS:** Manual start/stop push button switch; reversing drum switch; magnetic starter (one direction or reversible); limit switch, photo relay; others available.

LOAD CAPACITY @ 35 FPM				
HP	15" BF - 39" BF		45" BF - 57" BF	
	UP TO 50'	51' - 80'	UP TO 50'	51' - 80'
3/4	6050	3700	5150	2800
1-1/2	8700	6200	7800	5300
2	14100	11500	13200	10600
	19700	17600	18800	16700



Shown at left, a 5-strand chain transfer. Numerous types of chain transfers are available from Roach Conveyors. See page 87 for j-strand chain transfer.

**SIDE MOUNTED DRIVE**

