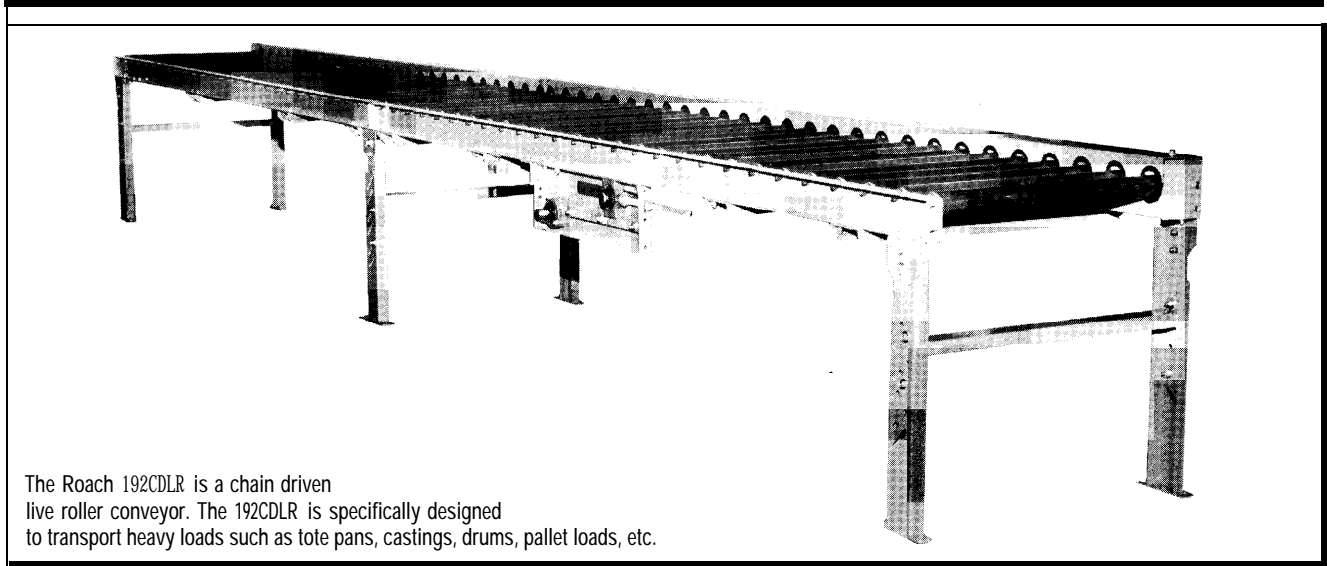


MODEL 192CDLR MEDIUM DUTY CHAIN DRIVEN LIVE ROLLER



The Roach 192CDLR is a chain driven live roller conveyor. The 192CDLR is specifically designed to transport heavy loads such as tote pans, castings, drums, pallet loads, etc.

SPECIFICATIONS

TREAD ROLLERS: 1.9" dia. x 12 ga.

CHAIN DRIVE: Single strand No. 50 roller chain.

CENTER DRIVE: Reversible drive either side mounted or underside mounted (specify). Main drive roller is supported by precision, heavy duty, lubricated, ball bearing units.

CHAIN GUARD: The chain drive is completely enclosed along the entire length of the conveyor.

ROLLER CENTERS: 4", 6", 8" or 12" centers available.

SPEED: 45 FPM, constant.

BEARINGS: Removable type, zinc-plated, grease packed, labyrinth sealed.

BED: 5-1/2" x 1-1/2" x and 3-1/2" x 1-1/2" x 10 ga. formed steel channel frame.

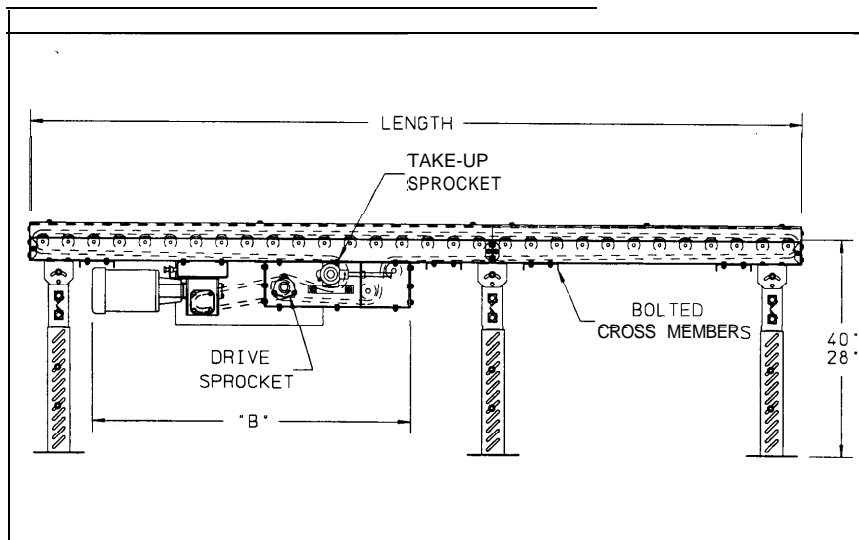
FLOOR SUPPORTS: Adjustable 28"-40" TOR. Supports can be lagged to floor.

MOTOR DRIVE: 1/3 HP, 230/460/3, 60 cycle, ODP right angle gear motor.

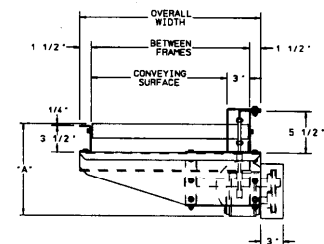
ELECTRICAL CONTROLS: Available as an option.



Indoff Distributor 860-632-2026



HP @ 45 FPM	REDUCER	"A"	"B"
1/3	RDW12340-02	13-9/16"	49-1/2"
1/2	RDW12340-02	6"	49-1/2"
3/4	RDW12340-02	13-9/16"	49-1/2"
1	RDW12155	13-31/32"	50-1/16"
1-1/2	RDW12150	15-11/16"	50-3/8"
2	RDW12150-02	16-1/2"	



■ 4 week shipment

SPECIFICATION TABLE

CONVEYOR LENGTH		5'	10'	15'	20'	25'	30'	35'	40'	45'	50'	60'	70'	80'
CONV. SURFACE	BF	Unit weights (lbs.) with tread rollers on 4" centers (For other centers, deduct weights below)												
12"	15"	327	479	647	799	967	1119	1287	1439	1606	1759	2078	2398	2643
18"	21"	366	542	734	909	1101	1277	1469	1644	1836	2011	2379	2746	3114
24"	27"	405	604	820	1019	1235	1434	1650	1849	2065	2264	2679	3094	3509
30"	33"	445	667	908	1130	1371	1593	1833	2055	2296	2518	2981	3444	3907
36"	39"	464	709	973	1218	1482	1727	1991	2236	2500	2745	3254	3763	4272
42"	45"	521	789	1078	1347	1636	1904	2193	2461	2750	3019	3578	4133	4691
48"	51"	560	852	1165	1457	1771	2062	2376	2668	2981	3273	3878	4483	5088

Deduct the following weights (lbs.) for other than 4" centers

	15" BF		21" BF		27" BF		33"		39" BF		45" BF		51" BF	
	Per 5'	Per 10'	Per 5'	Per 10'	Per 5'	Per	Per 5'	Per 10'	Per 5'	Per 10'	Per 5'	Per 10'	Per 5'	Per 10'
6"	-21	-42	-28	-16	-35	-69	-41	-82	-48	-96	-55	-109	-62	-123
8"	-32	-63	-42	-83	-52	-103	-62	-123	-72	-144	-82	-164	-92	-184
12"	-42	-84	-56	-111	-69	-138	-82	-164	-96	-191	-109	-218	-123	-245

OPTIONAL EQUIPMENT

DRIVE: Progressive roller-to-roller.

SPEED: Constant speed; 25-60 FPM (specify). Other constant or variable speeds available. NOTE: CAPACITY CHANGES WITH SPEED.

MOTORS: Available through 2 HP with characteristics such as totally enclosed, single phase, etc.

UNDERTRUSSED BED: Available to provide clearance underneath unit at bed joint locations. Specify location for undertrussing and desired clearance underneath unit.

FLOOR SUPPORTS: Other height supports available, adjustable or fixed.

GUARD RAILS: 1-3/4" x 1" formed channel, adjusts horizontally to 6" wider than BF and vertically to 6" above TOR.

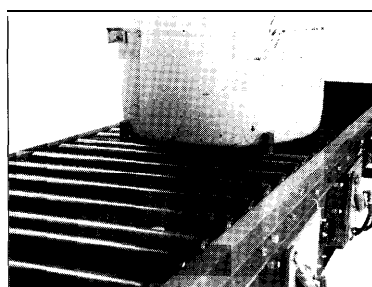
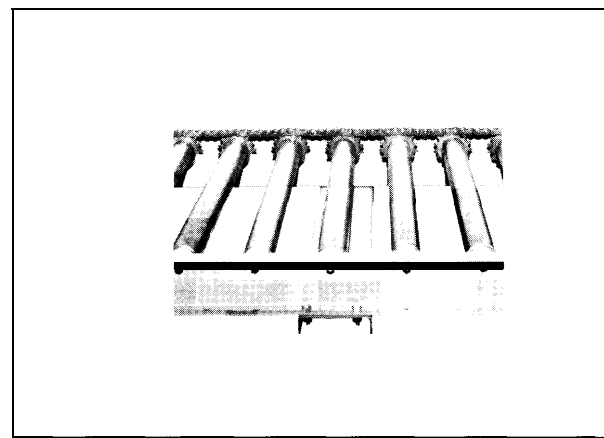
CEILING HANGERS: 5/8" dia. threaded rod with hardware to attach rods to conveyor. Provides 6' clearance between ceiling and TOR (furnished in place of floor supports).

ELECTRICAL CONTROLS: Manual start/stop push button switch; reversing drum switch; magnetic starter (one direction or reversible); limit switch, photo relay; others available.

LOAD CAPACITY @45 FPM

HP	TOTAL CAPACITY	HP	TOTAL CAPACITY
1/3	1200	1	3000
1/2	1560	1-1/2	3960
3/4	2400	2	4680

SINGLE STRAND DRIVE



Pneumatically actuated "pin stops" are an ideal component used when handling drums, barrels, wheels or other round containers for indexing, accumulation or momentary stoppage for filling or various assembly operations. See pages 140-1 for other styles of Pneumatic Stops in gravity or powered applications.