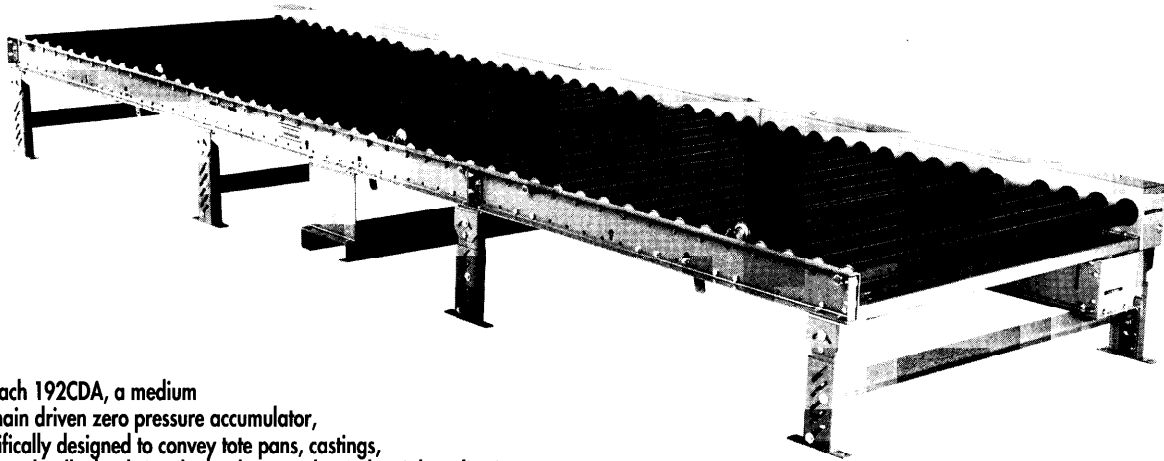


# MODEL 192CDA

## MEDIUM DUTY CHAIN DRIVEN ZERO PRESSURE ACCUMULATOR



The Roach 192CDA, a medium duty chain driven zero pressure accumulator, is specifically designed to convey tote pans, castings, drums, and pallet loads in oily, bottling or other industrial applications.



### SPECIFICATIONS

TREAD ROLLERS: 1.9" dia. x 12 ga.

CHAIN DRIVE: Roller-to-roller No. 40 roller chain. Zone-to-zone No. 60 roller chain.

CHAIN GUARD: All chains are completely enclosed along the entire length of the conveyor.

CENTER DRIVE: Drive either side mounted or underside mounted (specify). Drive shafts are supported by precision, heavy duty, lubricated, ball bearing units.

ROLLER CENTERS: 4" or 6" available.

ZONE LENGTH: 60 inches.

SPEED: 35 FPM, constant.

BEARINGS: Removable type, heavy duty ball bearings, zinc-plated, grease packed, labyrinth seal.

BED: 6-1/2" x 1-1/2" x 10 ga. and 4-1/2" x 1-1/2" x 10 ga. formed steel channel frame. Bed sections are bolted together with butt couplings and floor supports.

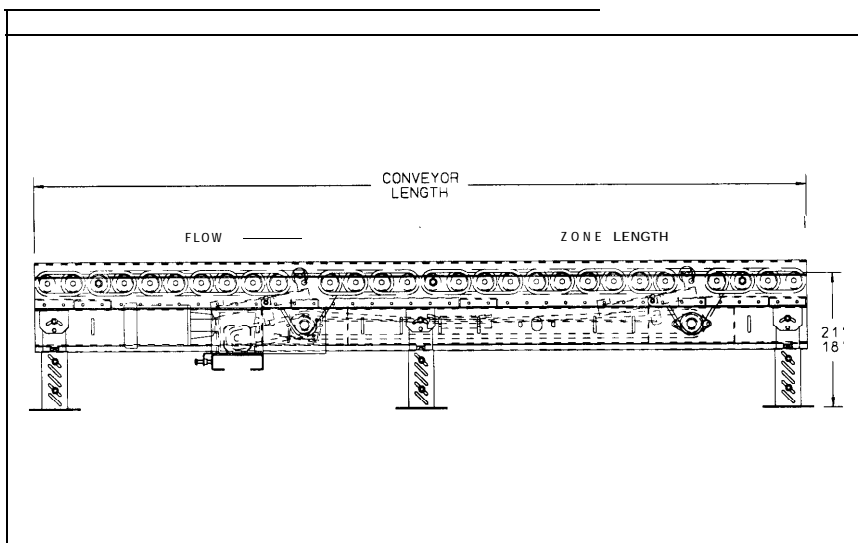
FLOOR SUPPORTS: For underside drive, SM-3 supports adjust from 18"-21" TOR; For side mounted drive SM-1 supports adjust from 12"-15" TOR. Supports provided on 5' centers.

MOTOR DRIVE: 1/3HP, 230/460/3, 60 cycle, ODP right angle gear motor.

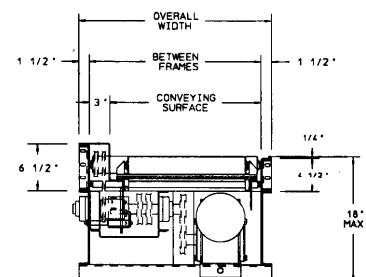
CAPACITY: 300 lbs./ft. up to a maximum of 1200 lb. pallet/load.

ELECTRICAL CONTROLS: Available as an option.

**Indoff Distributor 860-632-2026**



| HP @ 35 FPM | REDUCER       |
|-------------|---------------|
| 3/4         | RDW13340-02   |
| 1           | RDW13150-01   |
|             | RDW 13 150-02 |
| 2           | RDW 13200-02  |



# Indoff Nationwide Distributors for Roach

www.ahutton.com 860-632-2026 fax at 2028 web site at ahutton@ahutton.com

6 week shipment

## SPECIFICATION TABLE

| CONVEYOR LENGTH |               | 5'   | 10'  | 15'  | 20'  | 25'  | 30'  | 35'  | 40'  | 50'  | 60'  | 70'  | 80'  | 90'  | 100'  |
|-----------------|---------------|--|------|------|------|------|------|------|------|------|------|------|------|------|-------|
| BF              | CONV. SURFACE | Unit weights (lbs.) with 4" roller centers (For other centers, deduct weights below) |      |      |      |      |      |      |      |      |      |      |      |      |       |
| 15"             | 12"           | 471  | 761  | 1051 | 1341 | 1632 | 1922 | 2212 | 2502 | 3083 | 3663 | 4244 | 4824 | 5405 | 5986  |
| 21"             | 18"           | 511  | 832  | 1154 | 1476 | 1797 | 2119 | 2441 | 2762 | 3406 | 4049 | 4692 | 5336 | 5979 | 6622  |
| 27"             | 24"           | 561  | 922  | 1284 | 1646 | 2006 | 2369 | 2728 | 3093 | 3816 | 4539 | 5262 | 5977 | 6706 | 7435  |
| 33"             | 30"           | 609  | 998  | 1405 | 1802 | 2200 | 2598 | 2996 | 3393 | 4189 | 4985 | 5780 | 6582 | 7379 | 8176  |
| 39"             | 36"           | 648  | 1075 | 1502 | 1929 | 2357 | 2784 | 3211 | 3638 | 4493 | 5347 | 6202 | 7056 | 7915 | 8774  |
| 45"             | 42"           | 693  | 1156 | 1618 | 2081 | 2544 | 3007 | 3469 | 3932 | 4857 | 5783 | 6709 | 7634 | 8568 | 9502  |
| 51"             | 48"           | 733  | 1226 | 1720 | 2213 | 2707 | 3199 | 3693 | 4186 | 5173 | 6159 | 7146 | 8133 | 9132 | 10131 |

Deduct the following weights (lbs.) for other than 4" centers

| ROLLER CENTERS | 15" BF |         | 21" BF |         | 27" BF |         | 33" BF |         | 39" BF |         | 45" BF |         | 51" BF |         |
|----------------|--------|---------|--------|---------|--------|---------|--------|---------|--------|---------|--------|---------|--------|---------|
|                | Per 5' | Per 10' | Per 5' | Per 10' | Per 5' | Per 10' | Per 5' | Per 10' | Per 5' | Per 10' | Per 5' | Per 10' | Per 5' | Per 10' |
| 6"             | -25    | -50     | -30    | -60     | -40    | -80     | -50    | -100    | -55    | -110    | -65    | -130    | -70    | -140    |

## OPTIONAL EQUIPMENT

**ZONE LENGTHS:** 3' through 10' in 4" or 6" increments as per roller centers. Frame lengths will vary with zone lengths.

**BED:** 6-1/2"x 1-1/2"x7ga. and 4-1/2"x 1-1/2"x7ga. formed steel channel frame.

**TREAD ROLLERS:** 1.9" dia. x 9 ga. steel.

**FLOOR SUPPORTS:** Other height supports available, adjustable or fixed. Minimum elevation 13-1/8" TOR using side-mounted drive.

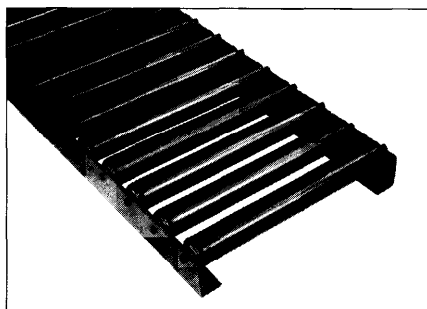
**SPEED:** Constant speed; 25-60 FPM (specify). Other constant or variable speeds available. NOTE: CAPACITY CHANGES WITH SPEED.

**MOTORS:** Available through 2 HP with characteristics such as totally enclosed, etc.

**ELECTRICAL CONTROLS:** Manual start/stop push button switch; magnetic starter (one direction); limit switch; electric solenoid; hydraulic dash pot.

| LOAD CAPACITY @ 35 FPM 4" RC* |                |        |
|-------------------------------|----------------|--------|
| HP                            | UP TO 50' L-10 |        |
|                               | 750            | ---    |
| 1/2                           | 2000           | ---    |
| 3/4                           | 4500           | 2250   |
|                               | 7500           | 4500   |
|                               | 12,000         | 10,000 |
| 2                             | 15,000         | 15,000 |

\*Capacity listed in chart must not exceed



Roach gravity conveyors are frequently designed for low-profile applications. 2-1/2"x 1-1/2"x3/16" structural angle frames, shown at left, transform a 192S gravity conveyor into a new low-profile unit.

## SIDE MOUNTED DRIVE

