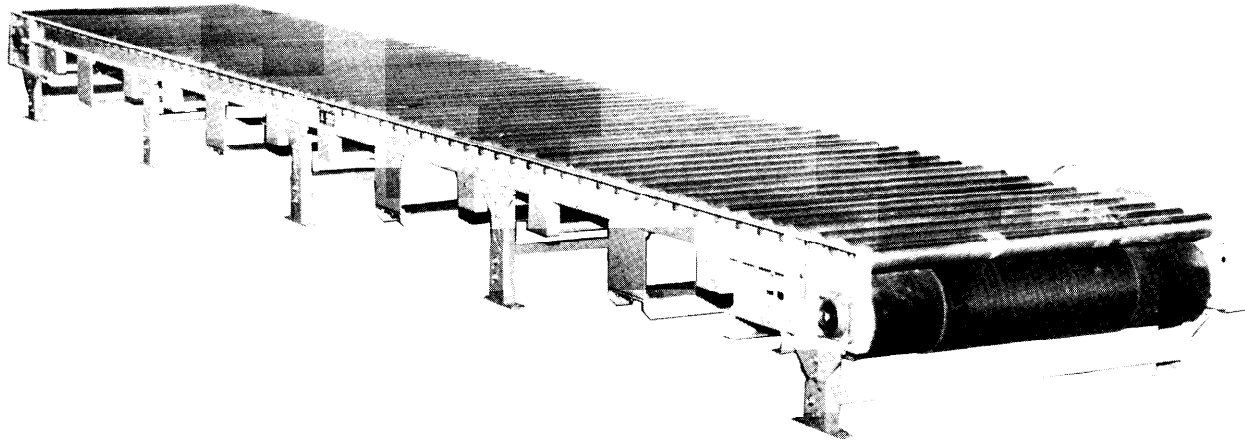


MODEL 251ZPA HEAVY DUN ZERO PRESSURE ACCUMULATOR



The Roach 251ZPA is a heavy duty zone pallet accumulator. It is designed for accumulating in 5'-0" intervals to eliminate products touching at any time.

SPECIFICATIONS

TREAD ROLLERS: 2-1/2" dia. x **11** ga.

PRESSURE ROLLERS: **1.9**" dia. x 16 ga.

BELTING: **PVC- 120**, friction surface, **24"** wide.

SIDE MOUNT END DRIVE: **Allows** one direction unit operation.

DRIVE PULLEY: 12" dia., with 1-1/2" x **6"** dia. shaft, crowned and fully lagged.

TAIL PULLEY: 8" dia., crowned, with 1-3/4" x **6"** dia. shaft.

TAKE-UP: Screw type unit at tail pulley provides **12"** belt take-up.

RETURN ROLLERS: 1-9" dia. x **16** ga., adjustable.

BELT SPEED: 35 FPM, constant.

BEARINGS: All pulley bearings are precision, heavy duty, lubricated, ball bearing units with cast iron housings.

BED: 5" x 1-1/2" x 3/16" formed steel channel frame slotted for tread rollers to pop-out. When unit is installed at 7'-0" elevation or higher, rollers must be retained in conveyor. Specify desired elevation. Bed sections are bolted together with butt couplings and floor supports.

ACCUMULATION CONTROLS: Roller limit switch every 5'. (If pallet structure will not accept roller limit switch, see options for photo-electric sensors).

FLOOR SUPPORTS: Elevation for **18"** top of roller.

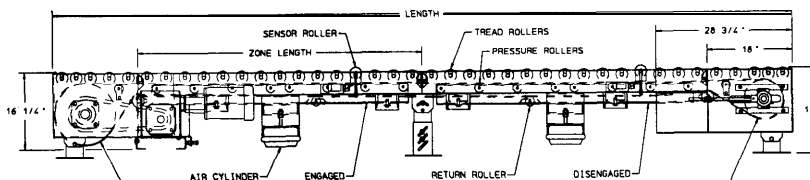
MOTOR DRIVE: **1 HP**, 230/460/3, 60 cycle, ODP right angle gear motor.

ROLLER CHAIN: No. 60 chain provided at drive pulley. Chain take-up provided on motor base.

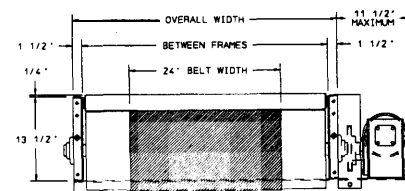
ELECTRICAL CONTROLS: Available as an option.

CAUTION: Pop-out rollers should be retained in frame if unit is elevated to 7'-0" and above.

Indoff Distributor 860-632-2026



| HP @ 35 FPM | REDUCER |
|-------------|--------------|
| 1 | RDW16150-03 |
| 1-1/2 | RDW16150-03 |
| 2 | RDW 16300-03 |
| 3 | RDW16300-03 |



SPECIFICATION TABLE

| CONVEYOR LENGTH | | 18' | 23' | 28' | 33' | 38' | 43' | 48' | 53' | 58' | 63' | 68' | 73' | 78' | 83' |
|-----------------|-----|--|------|------|------|------|------|------|------|------|------|------|------|------|-------|
| BF | OAW | Unit weights (lbs.) with 4" roller centers (For other centers, deduct weights below) | | | | | | | | | | | | | |
| 39" | 42" | 1974 | 2459 | 2944 | 3429 | 3914 | 4399 | 4884 | 5369 | 5854 | 6339 | 6824 | 7309 | 7794 | 8279 |
| 43" | 46" | 2105 | 2623 | 3141 | 3658 | 4176 | 4694 | 5211 | 5729 | 6247 | 6765 | 7282 | 7800 | 8318 | 8836 |
| 51" | 54" | 2308 | 2875 | 3443 | 4010 | 4577 | 5145 | 5712 | 6279 | 6846 | 7414 | 7981 | 8548 | 9116 | 9683 |
| 57" | 60" | 2476 | 3084 | 3692 | 4301 | 4901 | 5518 | 6126 | 6734 | 7343 | 7951 | 8560 | 9168 | 9776 | 10385 |

Deduct the following weights (lbs.) for other than 4" centers

| BF | RC | 18' | 23' | 28' | 33' | 38' | 43' | 48' | 53' | 58' | 63' | 68' | 73' | 78' | 83' |
|-----|----|------|------|------|------|------|------|-------|-------|-------|-------|-------|-------|-------|-------|
| 39" | 6" | -288 | -368 | -448 | -528 | -608 | -688 | -768 | -848 | -928 | -1008 | -1088 | -1168 | -1248 | -1328 |
| 43" | 6" | -306 | -391 | -476 | -561 | -646 | -731 | -816 | -901 | -986 | -1071 | -1156 | -1241 | -1326 | -1411 |
| 51" | 6" | -360 | -460 | -560 | -660 | -760 | -860 | -960 | -1060 | -1160 | -1260 | -1360 | -1460 | -1560 | -1660 |
| 57" | 6" | -396 | -506 | -616 | -726 | -836 | -946 | -1056 | -1166 | -1276 | -1386 | -1496 | -1606 | -1716 | -1826 |

OPTIONAL EQUIPMENT

BELTING: 12" wide PVC-1 20.

DRIVE PULLEY: 8" dia. with 1-7/16" dia. shaft, crowned and fully lagged.

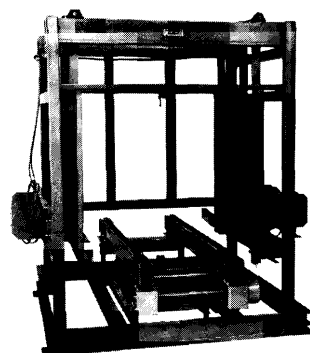
FLOOR SUPPORTS: Other height supports available, adjustable or fixed.

BELT SPEED: Constant speed; 25-60 FPM (specify). Other constant or variable speeds available. **NOTE: CAPACITY CHANGES WITH SPEED.**

MOTORS: Available through 3 HP with characteristics such as totally enclosed, single phase, etc.

ELECTRICAL CONTROLS: Manual start/stop push button switch; magnetic starter (one direction); limit switch; photo relay; others available.

| HP | LOAD CAPACITY @ 35 FPM | | | |
|-------|------------------------|-----------|-----------------|-----------|
| | 39" BF - 43" BF | | 51" BF - 57" BF | |
| | UP TO 40' | 41' - 80' | UP TO 40' | 41' - 80' |
| 1 | 5200 | 2150 | 4800 | -- |
| 1-1/2 | 8950 | 5900 | 7850 | 4600 |
| 2 | 12700 | 9700 | 11600 | 8300 |
| 3 | 19800 | 17200 | 19000 | 15800 |



A plywood stacker, recently designed and manufactured by Roach Conveyors, incorporates pneumatics and a chain drag conveyor to stack single sheets of plywood into taller stacks. This unit can also transform single pallets into stacks for storage or accumulation.

HEAW DUTY AIR CYLINDER

