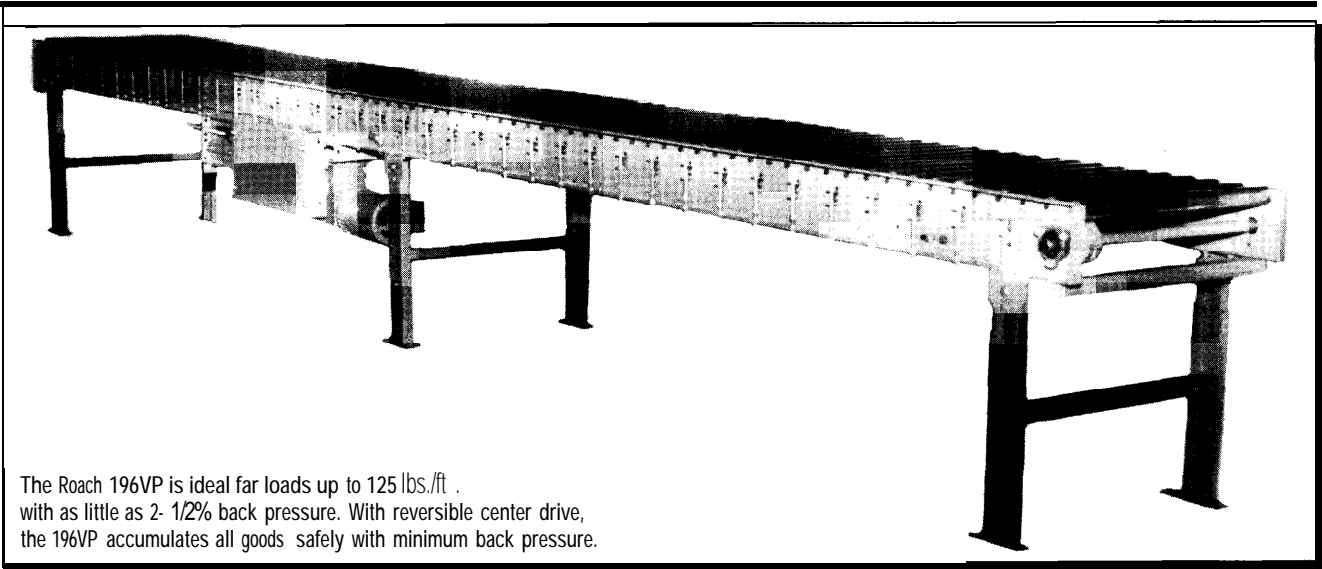


MODEL 196VP MEDIUM DUN VARIABLE PRESSURE LIVE ROLLER ACCUMULATOR



The Roach 196VP is ideal for loads up to 125 lbs./ft. with as little as 2- 1/2% back pressure. With reversible center drive, the 196VP accumulates all goods safely with minimum back pressure.

SPECIFICATIONS

TREAD ROLLERS: 1.9" dia. x 16 ga.

PRESSURE ROLLERS: 1.9" dia. x 16 ga.

BELTING: 2- 1/4" wide "high strength" PVC-1 50 belt. NOTE: WHEN SLAVE DRIVING OTHER UNITS, OPTIONAL WIDE PVC-1 20 DRIVE BELT MUST BE USED ON UNITS 20' LONG AND ABOVE.

CENTER DRIVE: Reversible drive with 24" integral belt take-up.

DRIVE PULLEY: 4" dia. with 1-3/1 6" dia. shaft or 8" dia. with 1-7/1 6" dia. shaft, both crowned and fully lagged.

BEARINGS: All pulley bearings are precision, heavy duty, lubricated, ball bearing units with cast iron housings.

END PULLEY: 4" dia., crowned, with 1-3/1 6" dia. shaft.

RETURN ROLLERS: 1.9" dia., adjustable.

BELT SPEED: 60 FPM, constant.

BED: 7" x 1-1/2" x 12 ga. channel frame slotted for tread rollers to pop-out. When unit is installed at 7'-0" elevation or higher, rollers must be retained in conveyor frame. Specify desired elevation. Bed sections attached with couplings and floor supports.

SQUARING RODS: Adjustable rods on underside of bed allow frame to be squared for improved belt tracking and are standard on all units over 30'.

FLOOR SUPPORTS: Adjustable 31"-43" TOR. Supports can be lagged to floor.

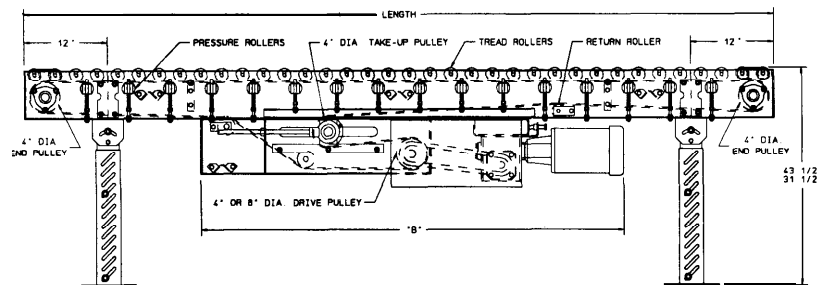
MOTOR DRIVE: 1/3 HP, 230/460/3, 60 cycle, ODP right angle gear motor.

ROLLER CHAIN: Drive pulley is driven by No. 50 roller chain for 1-1/2 HP or less and No. 60 chain on larger drives. Chain take-up provided on motor base.

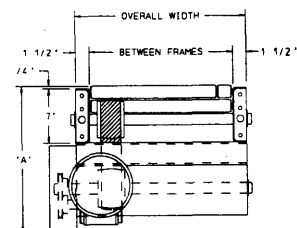
ELECTRICAL CONTROLS: Available as an option.

CAUTION: Pop-out rollers should be retained in frame if unit is elevated to 7'-0" and above.

Indoff Distributor 860-632-2026



HP @ 60 FPM	REDUCER	"A"	"B"
1/3	RDW13120-02	17-1/16"	54-7/32"
1/2	RDW13120-02	17-1/16"	54-7/32"
3/4	RDW13340-02	17-1 5/32"	55-5/1 6"
1	RDW13150-01	19-3/1 6"	55-5/8"
1 - 1 /2	RDW13150-02	19-3/1 6"	55-5/8"
2,3	RDW13200-02	21-1/8"	57-5/16"



■ 24 hour shipment

SPECIFICATION TABLE

Up to 20'-0" will have a 4" dia. drive pulley, 2 1'-0" and over will have on 8" dia. drive pulley

CONVEYOR LENGTH			5'	10'	15'	20'	25'	30'	40'	50'	60'	70'	80'	90'	100'
BF	OAW	BELT	Unit weights (lbs.) with roller centers (For other centers, deduct weights below)												
15"	18"	21/4"	419	553	722	856	1025	1159	1462	1765	2068	2371	2674	2977	3280
19"	22"	21/4"	447	600	782	934	1123	1270	1600	1934	2274	2595	2925	3255	3590
21"	24"	21/4"	477	645	847	1015	1217	1385	1755	2125	2495	2865	3235	3605	3975
25"	28"	21/4"	519	709	939	1132	1358	1543	1963	2370	2780	3193	3608	4020	4458
27"	30"	21/4"	539	738	977	1176	1415	1614	2052	2490	2928	3366	3804	4242	4680
33"	36"	21/4"	605	828	1107	1337	1613	1843	2349	2855	3361	3867	4373	4879	5385
39"	42"	21/4"	664	928	1237	1501	1810	2074	2647	3220	3793	4366	4939	5512	6085

Deduct the following weights (lbs.) for other than 3" centers

TREAD ROLLER CENTERS	15" BF		19" BF		21" BF		25" BF		27" BF		33" BF		39" BF	
	Per 5'	Per 10'	Per 5'	Per 10'	Per 5'	Per 10'	Per 5'	Per 10'	Per 5'	Per 10'	Per 5'	Per 10'	Per 5'	Per 10'
4 1/2"	-23	-45	-28	-55	-30	-60	-35	-69	-37	-75	-45	-90	-53	-105
6"	-45	-90	-54	-108	-60	-120	-69	-138	-75	-150	-90	-180	-105	-210

OPTIONAL EQUIPMENT

BELTING: 6" wide PVC-I 20; 6" wide PVC-I 50; 3-ply Friction surface; 3-ply black neoprene friction surface.

AUXILIARY TAKE-UP: Provides 24" of belt take-up. Specify location.

END DRIVE: May be located underneath or on side of conveyor. Minimum possible height is 20" TOR for underneath mounted drive and 10" TOR for side mounted end drive. Side mounted drive may be located on either side of conveyor (specify). Belt take-up required for either drive.

BELT SPEED: Constant speed of 35-70 FPM for 4" drive pulley and 45-90 FPM for 8" drive pulley (specify). Other constant or variable speeds available. **NOTE: CAPACITY CHANGES WITH SPEED.**

MOTORS: Available through 2 HP with characteristics such as totally enclosed, single phase, etc.

GUARD RAILS: 1-3/4" x 1" formed channel, adjusts horizontally to 10" wider than belt and vertically to 6" above belt.

FLOOR SUPPORTS: Other height supports (adjustable or fixed); also casted supports.

CEILING HANGERS: 5/8" dia. threaded rod with hardware to attach rods to conveyor. Provides 6' clearance between ceiling and TOR (furnished in place of floor supports).

ELECTRICAL CONTROLS: Manual start/stop push button switch; reversing drum switch; magnetic starter (one direction or reversible); limit switch; photo relay; others available.

LOAD CAPACITY @ 60 FPM		
HP	13" BF - 25" BF	27" BF - 39" BF
1/3	—	..
1/2	750	375
3/4	1350	1000
1	1800	1500
	2600	2200
2	3400	2900

VARIABLE PRESSURE ADJUSTMENT

