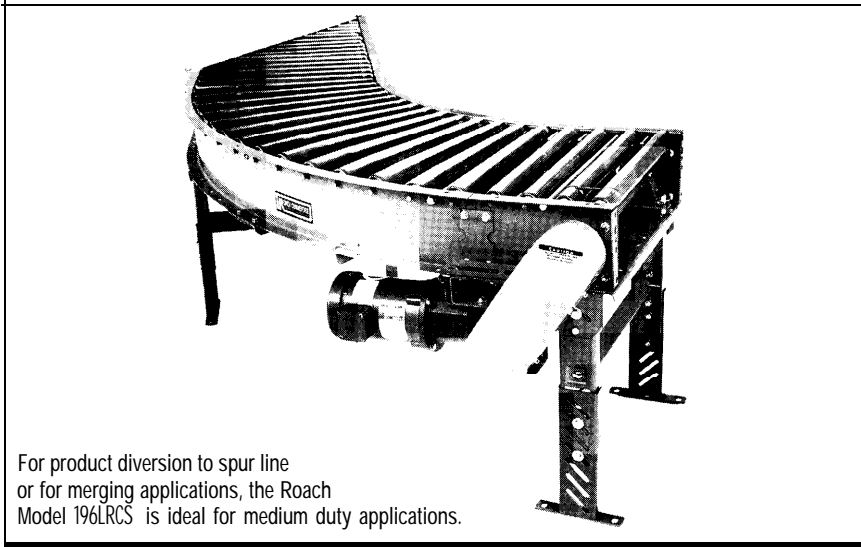


MODEL 196LRCS

MEDIUM DUTY BELT DRIVEN LIVE ROLLER CURVE SPUR



For product diversion to spur line or for merging applications, the Roach Model 196LRCS is ideal for medium duty applications.

SPECIFICATIONS

TREAD ROLLERS: 2-12" dia. to 1-11/16" dia. x 14 ga. tapered rollers; 1.9" dia. x 16 ga. straight tangent rollers.

PRESSURE SHEAVES: Provides drive belt pressure to upper tread rollers.

BELT: "B" section V-belt.

TAKE-UP: Screw type adjustable sheave with flat idler sheaves provided to maintain belt tension.

TANGENTS: 12" opposite spur end on 60/30 unit; 18" opposite spur end on 45/45 unit.

BED: 7" x 1-1/2" x 12 ga. formed

BEARINGS: End shafts are supported by precision, heavy duty, lubricated, ball bearing units with cast iron housings.

FLOOR SUPPORTS: Adjustable 31"- 43" TOR. Supports can be lagged to floor.

BELT SPEED: 60 FPM, constant.

MOTOR DRIVE: 1/3 HP, 230/460/3, 60 cycle, ODP right angle gear motor, located at infeed end of curve below bed.

DIRECTION OF FLOW: Specify right to left or left to right.

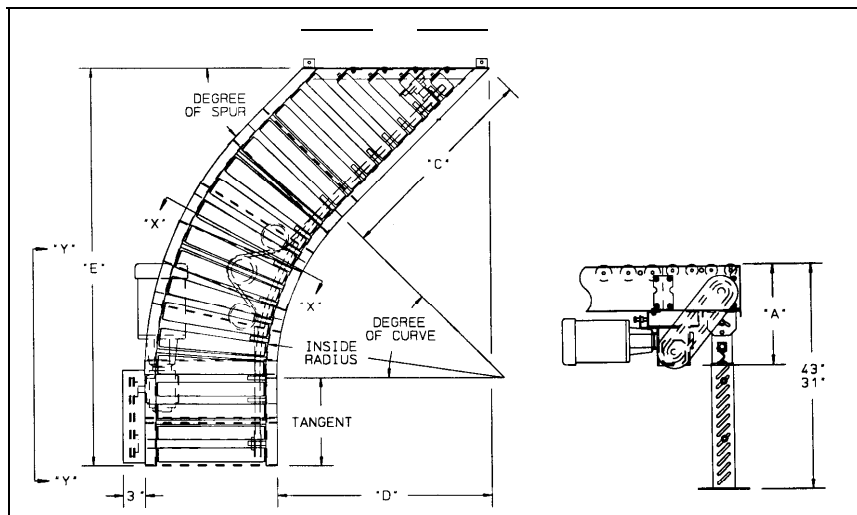
ROLLER CHAIN: Drive shaft is driven by No. 50 chain.

CAPACITY: 500 lb. total distributed live load.

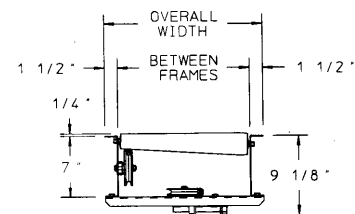
ELECTRICAL CONTROLS: Available as an option.

NOTE: This unit is not recommended for accumulating loads.

Indoff Distributor 860-632-2026



UP@ 60 FPM	REDUCER	"A"
1/3	RDW 13	15-1/2"
1/2	RDW 13 120-02,03	15-1/2"
3/4	RDW13340-02,03	16 - 1/2"
1		16-7/8"
1-1/2	RDW13150-02,03	1 8 "
2	RDW 13200-02,03	19-5/16"



VIEW 'X' - 'X'

SPECIFICATION TABLE

UNIT			MODEL 196LRCS - 45* / 45*					MODEL 196LRCS - 60* / 30*				
BF	OAW	INSIDE RADIUS	"B"	"C"	"D"	"E"	WT. (lbs.)	"B"	"C"	"D"	"E"	WT. (lbs.)
13"	16"	2'-8-1/2"	22-5/8"	26-1/2"	27-13/16"	58-21/32"	422	32"		47-21/32"	57-13/32"	443
15"	18"	2'-8-1/2"	25-15/32"	28-1/2"	29-1/4"	60-3/32"	441	36"	40-9/16"	50-21/32"	59-1/8"	478
17"	20"	2'-8-1/2"	28-9/32"	30-1/2"	30-21/32"	61-1/2"	465	40"	44-1/32"	53-21/32"	60-7/8"	505
19"	22"	2'-8-1/2"		32-1/2"	32-1/16"	62-29/32"	486	44"	47-1/2"	56-21/32"	62-19/32"	534
21"	24"	2'-8-1/2"	33-15/16"	34-1/2"	33-15/16"	64-5/16"	514	48"	50-31/32"	59-21/32"	64-11/32"	571
23"	26"	2'-8-1/2"	36-25/32"	36-1/2"	34-29/32"	65-23/32"	541	52"	54-9/16"	62-21/32"	66-1/16"	605
25"	28"	2'-8-1/2"	39-19/32"	38-1/2"	36-5/16"	67-5/32"	571	56"	57-29/32"	65-21/32"	67-13/16"	644
27"	30"	2'-8-1/2"	42-7/16"	40-1/2"	37-23/32"	68-9/16"	599	60"	61-3/8"	68-21/32"	69-17/32"	678
31"	34"	4'-0"	48-3/32"	44-1/2"	45-3/32"	82-11/32"	718	68"	68-9/32"	82-13/32"	86-13/32"	843
33"	36"	4'-0"	50-29/32"	46-1/2"	46-1/2"	83-25/32"	745	72"	71-3/4"	85-13/32"	88-5/32"	878
37"	40"	4'-0"	56-9/16"	50-1/2"	49-11/32"	86-19/32"	823	80"	78-11/16"	91-13/32"	91-5/8"	982
39"	42"	4'-0"	59-13/32"	52-1/2"	50-3/4"	88-1/32"	865	84"	82-5/32"	94-13/32"	93-11/32"	1053

OPTIONAL EQUIPMENT

SIDE MOUNTED END DRIVE: Provides a minimum overall conveyor height of 9-3/8".

BELT SPEED: Constant speed; 35-120 FPM (specify). Other constant or variable speeds available.

MOTORS: Available through 2 HP with characteristics such as totally enclosed, single phase, etc.

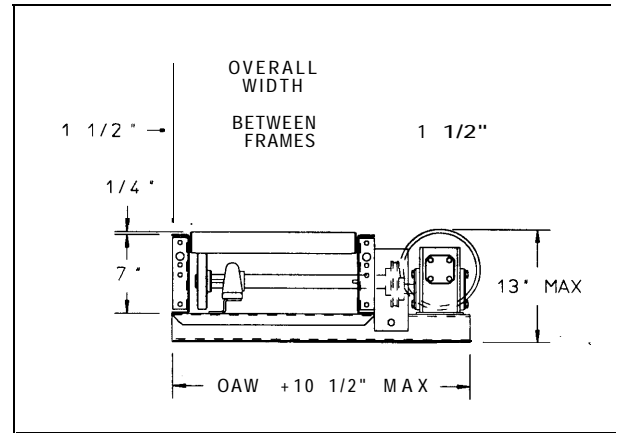
GUARD RAILS: 1-3/4" x 1" formed channel, adjusts horizontally to 8" wider than roller and vertically to 6" above roller.

FLOOR SUPPORTS: Other height supports available, adjustable or fixed. Casters supports also available.

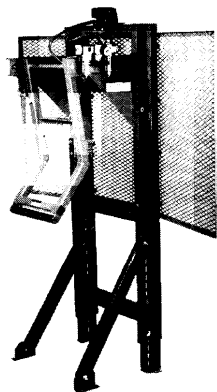
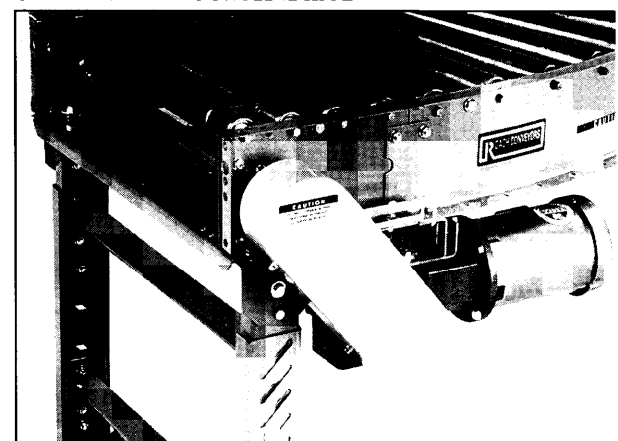
CEILING HANGERS: 5/8" dia. threaded rod with hardware to attach rods to conveyor. Provides 6' clearance between ceiling and TOR (furnished in place of floor supports).

ELECTRICAL CONTROLS: Manual start/stop push button switch; reversing drum switch; magnetic starter (one direction or reversible); limit switch; photo relay; others available.

SIDE MOUNTED DRIVE



UNDERNEATH MOUNTED DRIVE



An overhead mounted pusher diverts packages 90° onto spur lines, work tables, etc. This unit may be used in areas with limited space where a high speed sorter (model HSS, page 91) cannot be used. Contact the Roach national sales office at 501-483-7631 for additional information.