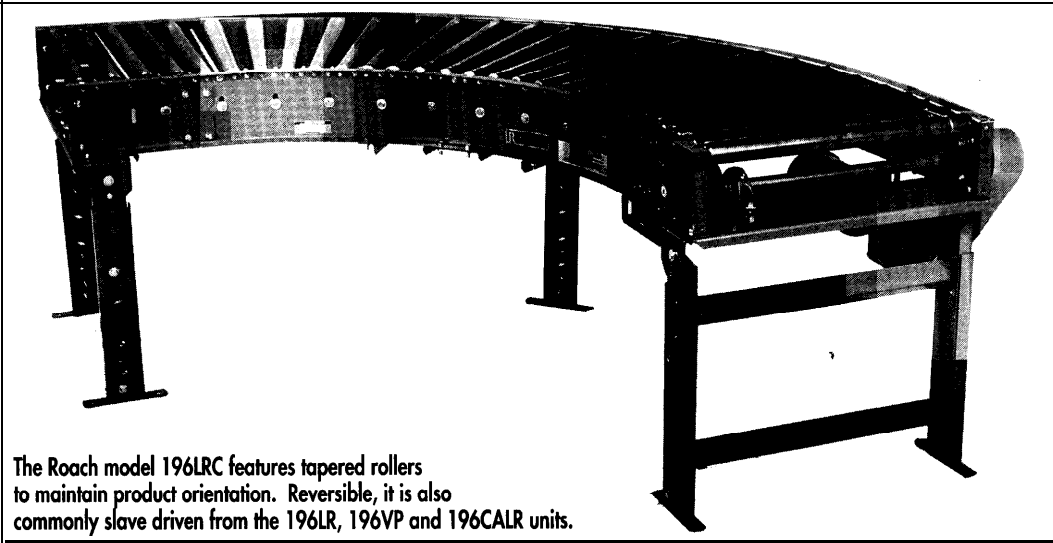


MODEL 196LRC MEDIUM DUTY BELT DRIVEN LIVE ROLLER CURVE



The Roach model 196LRC features tapered rollers to maintain product orientation. Reversible, it is also commonly slave driven from the 196LR, 196VP and 196CALR units.

SPECIFICATIONS

TREAD ROLLERS: 2-1/2" dia. to 1-1 1/16" dia. x 14 ga. tapered rollers, 1.9" dia. x 16 ga. straight tangent rollers.

PRESSURE SHEAVES: Provides drive belt pressure to upper tread rollers.

BELT: "B" section V-belt.

TAKE-UP: Screw type adjustable sheave with flat idler sheaves provided to maintain belt tension.

TANGENTS: 12" both ends on 90" unit, 18" both ends on 45" unit.

BEARINGS: End shafts are supported by precision, heavy duty, lubricated, ball bearing units with cast iron housings.

BED: 7" x 1-1/2" x 12 ga. formed steel channel frame.

BELT SPEED: 60 FPM, constant.

FLOOR SUPPORTS: Adjustable 3 1"-43" TOR. Supports can be lagged to floor.

ROLLER CHAIN: Drive shaft is driven by No. 50 chain.

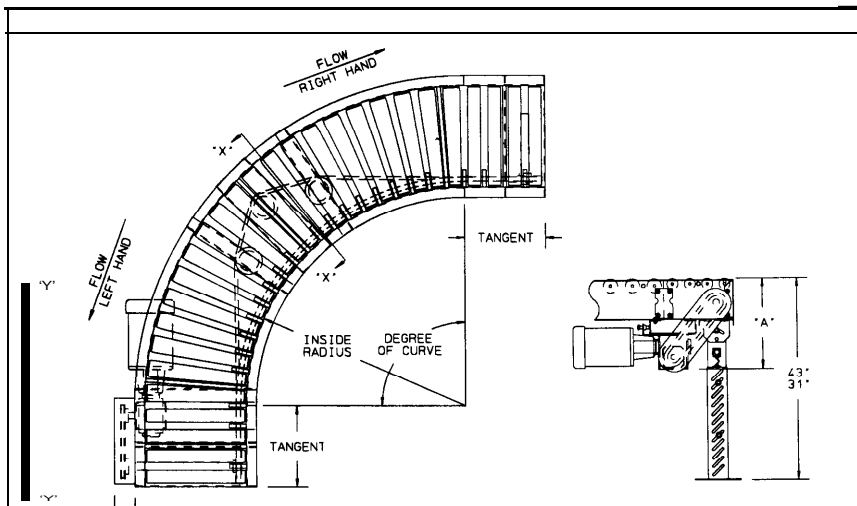
MOTOR DRIVE: 1/3 HP, 230/460/3, 60 cycle, ODP right angle gear motor, located at infeed end of curve below bed.

DIRECTION OF FLOW: Specify right to left or left to right.

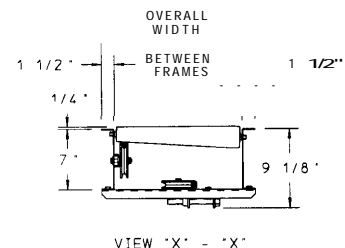
CAPACITY: 500 lb. total distributed live load.

ELECTRICAL CONTROLS: Available as an option.

NOTE: This unit is not recommended for accumulating loads.



HP 60 FPM	REDUCER	A
1/3, 1/2	RDW13120-02,03	15-1/2"
3/4	RDW13340-02,03	16- 1/2"
1	RDW13150-01,04	16-7/8"
1-1/2	RDW 13 150-02,03	18"
2	RDW13200-02,03	19-5/16"



Indoff Distributor 860-632-2026

SPECIFICATION TABLE

MODEL 196LRC - 90*						MODEL 196LRC -45* *-degrees					
BF	OAW	INSIDE RADIUS	TAPERED ROLLERS	STRAIGHT ROLLERS	---	BF	OAW	INSIDE RADIUS	TAPERED ROLLERS	STRAIGHT ROLLERS	
13"	16"	2'-8 1/2"	20	8	367	13"	16"	2'-8 1/2"	10	12	359
15"	18"	2'-8 1/2"	20	8	380	15"	18"	2'-8 1/2"	10	12	370
17"	20"	2'-8 1/2"	20	8	397	17"	20"	2'-8 1/2"	10	12	385
19"	22"	2'-8 1/2"	20	8	413	19"	22"	2'-8 1/2"	10	12	397
21"	24"	2'-8 1/2"	20	8	426	21"	24"	2'-8 1/2"	10	12	408
23"	26"	2'-8 1/2"	20	8	440	23"	26"	2'-8 1/2"	10	12	421
25"	28"	2'-8 1/2"	20	8	459	25"	28"	2'-8 1/2"	10	12	436
27"	30"	2'-8 1/2"	20	8	473	27"	30"	2'-8 1/2"	10	12	450
31"	34"	4'-0"	28	8	640	31"	34"	4'-0"	14	12	547
33"	36"	4'-0"	28	8	661	33"	36"	4'-0"	14	12	563
37"	40"	4'-0"	28	8	707	37"	40"	4'-0"	14	12	598
39"	42"	4'-0"	28	8	730	39"	42"	4'-0"	14	12	616

OPTIONAL EQUIPMENT

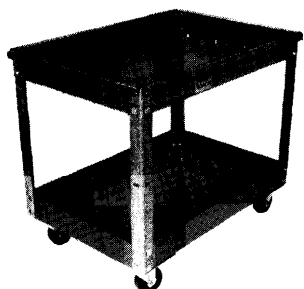
SIDE MOUNTED END DRIVE: Provides a minimum overall conveyor height of 9-3/8".

DRIVE: May be located on inside radius of curve.

BELT SPEED: Constant speed; 35-120 FPM (specify). Other constant or variable speeds available.

MOTORS: Available through 2 HP with characteristics such as totally enclosed, single phase, etc.

GUARD RAILS: 1-3/4" x 1" formed channel, adjusts horizontally to 8" wider than roller and vertically to 6" above roller.



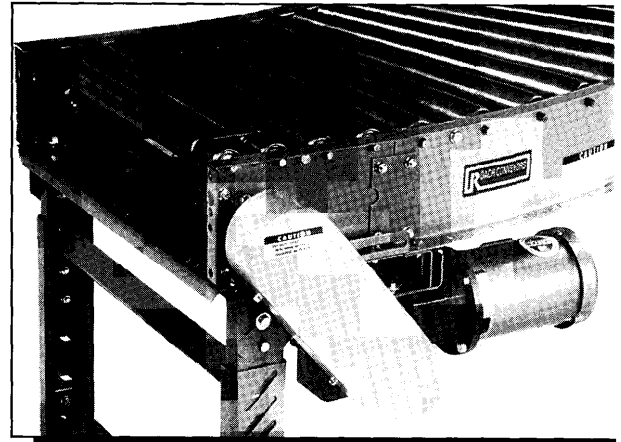
Economically priced, this heavy-duty mobile cart is designed to outlast all others. Hundreds of these units carry conveyor components to their final destination for assembly at the Roach Conveyors manufacturing facility, Trumann, Arkansas.

FLOOR SUPPORTS: Other height supports available, adjustable or fixed. Casters supports also available.

CEILING HANGERS: 5/8" dia. threaded rod with hardware to attach rods to conveyor. Provides 6' clearance between ceiling and TOR [furnished in place of floor supports].

ELECTRICAL CONTROLS: Manual start/stop push button switch; reversing drum switch; magnetic starter (one direction or reversible); limit switch; photo relay; others available.

UNDERNEATH MOUNTED DRIVE



STRAIGHT TANGENT (located both ends of

