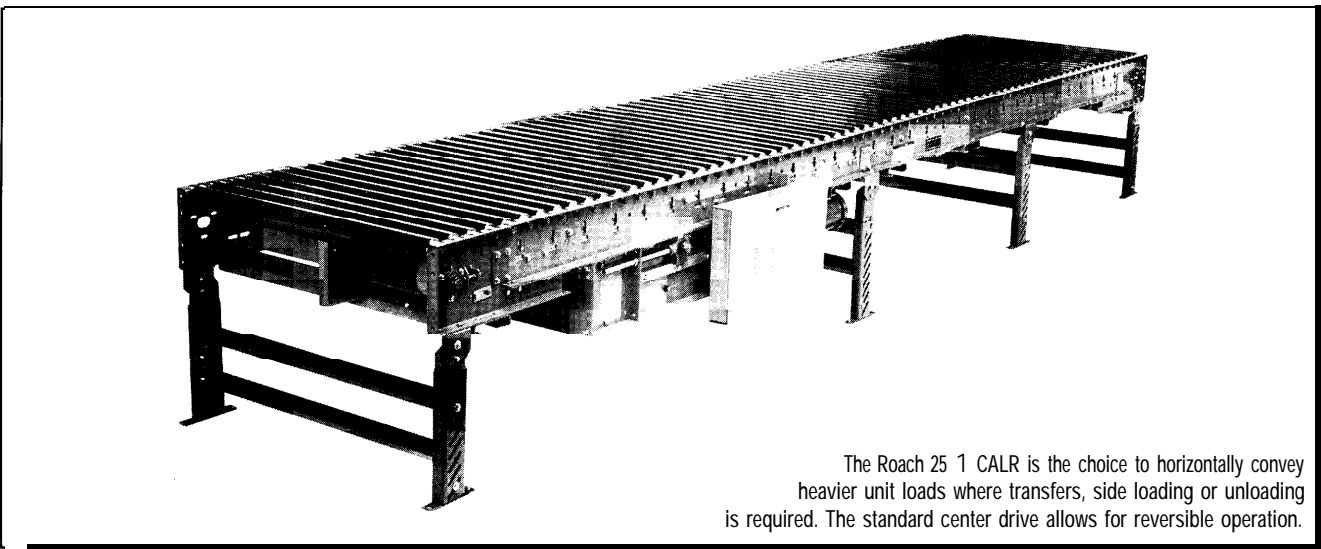


# MODEL 25 1 CALR HEAVY DUN CAM ADJUSTED LIVE ROLLER



The Roach 25 1 CALR is the choice to horizontally convey heavier unit loads where transfers, side loading or unloading is required. The standard center drive allows for reversible operation.

## SPECIFICATIONS

TREAD ROLLERS: 2-1/2" dia. x 11 ga.

PRESSURE ROLLERS: 1.9" dia.

BELTING: 12" wide **PVC-1 20** friction surface.

CENTER DRIVE: Reversible drive with 24" integral belt take-up. Specify location.

DRIVE PULLEY 8" dia. with 1-7/16" dia. shaft on 15"-39" BF or 12" dia. with 1-15/16" dia. shaft on 43"-57" BF, both crowned and fully lagged.

END PULLEY: 4" dia. with 1-3/16" dia. shaft on 15"-39" BF (crowned); 6" dia. with 1-7/16" dia. shaft on 45"-57" BF.

RETURN ROLLERS: 1.9" dia., adjustable.

BELT SPEED: 35 **FPM**, constant.

BEARINGS: All pulley bearings are precision, heavy duty, lubricated, ball bearing units with cast iron housings.

BED: 7" x 1-1/2" x 10 ga. formed steel channel frame slotted for tread rollers to pop-out. When unit is installed at elevation or higher, rollers must be retained in conveyor frame. Specify desired elevation. Bed sections attached with couplings and floor supports.

SQUARING RODS: Adjustable rods on underside of bed allow frame to be squared for improved belt tracking and are standard on all units over 30'.

FLOOR SUPPORTS: Adjustable 3 1/4"-43" TOR. Supports can be lagged to floor.

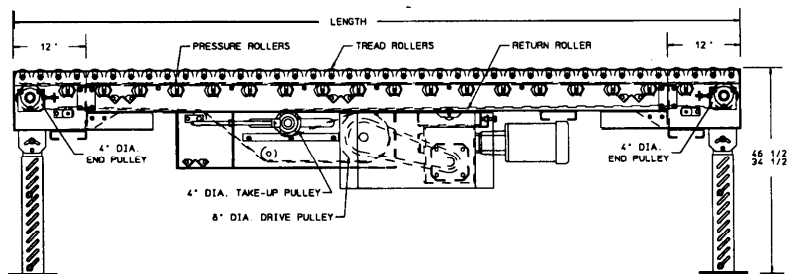
MOTORDRIVE: 1 HP, 230/460/3, 60 cycle, ODP right angle gear motor.

ROLLER CHAIN: Drive pulley is driven by No. 50 chain for 1-1/2 HP or less and No. 60 chain on larger drives. Chain take-up provided on motor base.

ELECTRICAL CONTROLS: Available as an option.

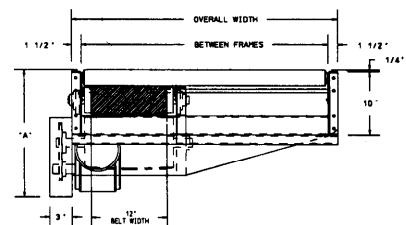
CAUTION: Pop-out rollers should be retained in frame if unit is elevated to 7'-0" and above.

## Indoff Distributor 860-632-2026



HP @ 35 FPM	REDUCER	"A"	"B"
1	RDW 13 150-01	19-3/16"	55-5/8"
1-1/2	RDW13150-02	19-3/16"	55-5/8"
2,3	RDW13200-02	21-1/8"	57-5/16"

NOTE: Chart applies for 8" dia. drive pulley only.



■ 24 hour shipment ■ 3 week shipment

**SPECIFICATION TABLE**

CONVEYOR LENGTH			5'	10'	15'	20'	25'	30'	40'	50'	60'	70'	80'	90'	100'
BF	OAW	BELT	Unit weights (lbs.) with 3" roller centers (For other centers, deduct weights below)												
15"	18"	12"	524	762	1036	1274	1548	1786	2298	2810	3322	3834	4346	4858	5370
21"	24"	12"	602	894	1221	1513	1840	2132	2751	3370	3989	4608	5227	5846	6465
27"	30"	12"	698	1055	1453	1810	2208	2565	3320	4075	4830	5585	6340	7095	7850
33"	36"	12"	790	1197	1663	2079	2541	2956	3833	4710	5587	6464	7341	8218	9095
39"	42"	12"	873	1345	1863	2335	2853	3325	4315	5305	6295	7285	8275	9265	10255
43"	46"	12"	956	1493	2063	2591	3165	3694	4797	5900	7003	8106	9209	10312	11415
51'	54'	1 2"	1039	1641	2263	2847	3477	4063	5279	6495	7711	8927	10143	11359	12575
57"	60"	12"	1122	1789	2463	3103	3789	4432	5761	7090	8419	9748	11077	12406	13735

Deduct the following weights (lbs.) for other than 3" centers

TREAD ROLLER CENTERS	15" BF		21" BF		27" BF		33" BF		39" BF							
	Per 5'	Per 10'	Per 5'	Per 10'	Per 5'	Per 10'	Per 5'	Per 10'	Per 5'	Per 10'	Per 5'	Per 10'	Per 5'	Per 10'	Per 5'	Per 10'
4 1/2"	-54	-108	-68	-136	-87	-174	-104	-208	-120	-240	-136	-272	-152	-304	-168	-336
6"	-89	-178	-114	-228	-146	-292	-174	-348	-201	-402	-228	-456	-255	-510	-282	-564
9"	-120	-240	-154	-308	-197	-394	-235	-470	-272	-544	-309	-618	-346	-692	-383	-766
12"	-133	-266	-171	-342	-219	-438	-261	-522	-301	-602	-341	-682	-381	-762	-421	-842

**OPTIONAL EQUIPMENT**

**BELTING:** 3-ply friction surface; 3-ply black neoprene friction surface.

**END DRIVE:** May be located underneath or on side of conveyor. Minimum possible height is 20" TOR for underneath mounted drive and 10" TOR for side mounted end drive. Side mounted drive may be located on either side of conveyor (specify). Belt take-up required for either drive.

**AUXILIARY TAKE-UP:** Provides 24" of belt take-up. Specify location.

**FLOOR SUPPORTS:** Other height supports available, adjustable or fixed. Castered supports also available.

**CEILING HANGERS:** 5/8" dia. threaded rod with hardware to attach rods to conveyor. Provides 6' clearance between ceiling and TOR (furnished in place of floor supports).

**BELT SPEED:** Constant speed; 35-120 FPM (specify). Other constant or variable speeds available. NOTE: CAPACITY CHANGES WITH SPEED.

**MOTORS:** Available through 3 HP with characteristics such as totally enclosed, single phase, etc.

**ELECTRICAL CONTROLS:** Manual start/stop push button switch; reversing drum switch; magnetic starter (one direction or reversible); limit switch; photo relay; others available.

LOAD CAPACITY@ 3 5 F P M				
HP	15" BF - 39" BF		45" BF - 57" BF	
	UP TO 50'	51' - 100'	UP TO 50'	51' - 100'
1	900	---	---	---
1-1/2	3000	---	1400	---
2	5600	1700	4000	---
3	9900	6000	8300	3000

**GA 1 GUARDS (Rollers up to 7' elev.)**

