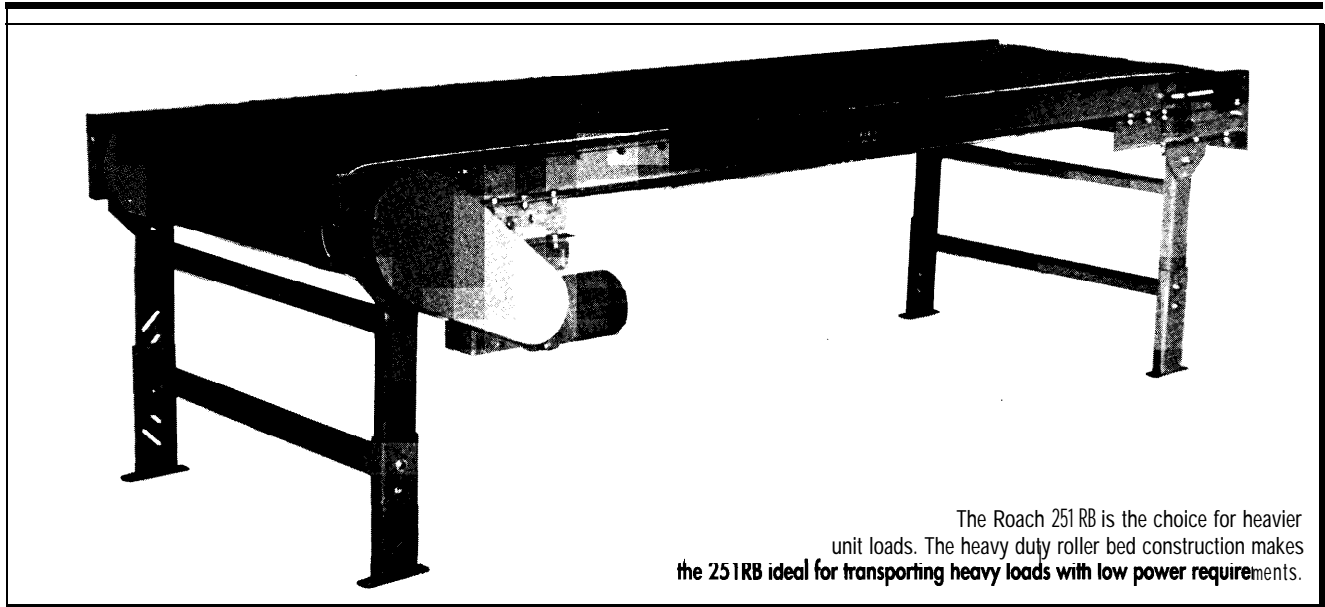


MODEL 25 1 RB HEAVY DUN ROLLER BED BELT CONVEYOR



The Roach 251 RB is the choice for heavier unit loads. The heavy duty roller bed construction makes the 251RB ideal for transporting heavy loads with low power requirements.

SPECIFICATIONS

BELTING: PVC-1 20 black friction surface.

DRIVE PULLEY: 8" dia. with 1-7/1 6" dia. shaft on 1 Y-39" BF; 12" dia. with 1-15/1 6" dia. shaft on 45"-57" BF; both crowned and fully lagged.

TAIL PULLEY: 4" dia. with 1-3/1 6" dia. shaft on 15"-39" BF [crowned]; 6" dia. with 1-7/1 6" dia. shaft on 45"-57" BF.

RETURN ROLLERS: 1.9" dia., adjustable.

END DRIVE: Allows one-direction (unit) operation; add optional center drive for reversible application.

TAKE-UP: Screw type unit at tail pulley provides 12" belt take-up.

BELT SPEED: 35 FPM, constant.

BEARINGS: All pulley bearings are precision, heavy duty, lubricated, ball bearing units with cast iron housings.

BED: 4" x 1-1/2" x 7 ga. channel frame with 2-1/2" dia. x 11 ga. rollers. Bed sections attached with couplings and floor supports.

SQUARING RODS: Adjustable rods on underside of bed allow frame to be squared for improved belt tracking and are standard on all units over 30'.

MOTOR DRIVE: 1 HP, 230/460/3, 60 cycle, ODP right angle gear motor.

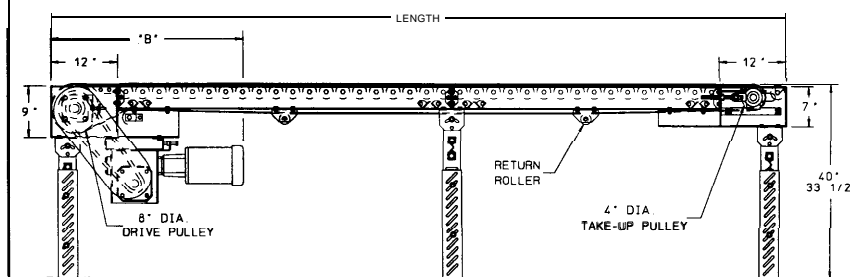
FLOOR SUPPORTS: Adjustable 31"-40" TOB. Supports provided on 5' centers. Supports can be lagged to floor.

ROLLER CHAIN: Drive pulley is driven by No. 50 roller chain for 1-1/2 HP or less and No. 60 chain on larger drives. Chain take-up provided on moto, base.

ELECTRICAL CONTROLS: Optional.

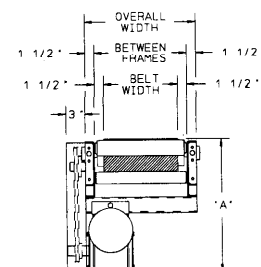
CAUTION: To prevent pinch points that exist when belt conveyors are permanently attached to other conveyors, use the connector brackets with safety pop out roller shown on page 147 (other stationary equipment will require proper guarding and safety devices supplied by others).

Indoff Distributor 860-632-2026



HP @ 35 FPM	REDUCER	" A "	" B "
1	RDW13150-01	19-3/1 6 "	55-5/8 "
1-1/2	RDW13150-02	19-3/1 6 "	55-5/8 "
2,3	RDW13200-02	21-1/8 "	57-5/16 "

NOTE: Chart applies for 8" dia. drive pulley



■ 24 hour shipment ■ 3 week shipment

SPECIFICATION TABLE

Conveyor Length			5'	10'	15'	20'	25'	30'	40'	50'	60'	70'	80'	90'	100'
BF	0AW	BELT	Unit weights (lbs.) with 3" roller centers (For other centers, deduct weights below)												
15"	18"	12"	508	659	897	1101	1340	1543	1985	2427	2869	3311	3753	4195	4638
21"	24"	18"	532	760	1041	1283	1564	1806	2329	2852	3375	3898	4421	4944	5468
27"	30"	24"	613	907	1180	1558	1901	2209	2860	3511	4162	4813	5464	6115	6767
33"	36"	30"	677	1027	1421	1785	2179	2543	3297	4059	4817	5575	6333	7091	7850
39"	42"	36"	747	1142	1596	2007	2459	2872	3737	4602	5467	6332	7197	8062	8928
45"	48"	42"	818	1292	1830	2318	2856	3344	4370	5401	6422	7448	8474	9500	10527
51"	54"	48"	889	1442	2064	2631	3253	3820	5009	6198	7387	8576	9765	10954	12144
57"	60"	54"	960	1592	2298	2944	3650	4296	5648	6995	8352	9704	11056	12408	13761

Deduct the following weights (lbs.) for other than 3" centers

ROLLER CENTERS	15" BF		21" BF		27" BF		33" BF		39" BF		45" BF		51" BF		57" BF	
	Per 5'	Per 10'	Per 5'	Per 10'	Per 5'	Per 10'	Per 5'	Per 10'	Per 5'	Per 10'	Per 5'	Per 10'	Per 5'	Per 10'	Per 5'	Per 10'
4 1/2"	-36	-72	-45	-90	-56	-112	-68	-136	-79	-158	-89	-178	-100	-200	-110	-220
6"	-72	-144	-90	-180	-112	-224	-136	-272	-158	-316	-178	-356	-200	-400	-220	-440
9"	-93	-186	-117	-234	-150	-300	-177	-354	-205	-410	-232	-464	-259	-518	-286	-572
1 1/2"	-108	-216	-135	-270	-168	-336	-204	-408	-237	-474	-267	-534	-300	-600	-330	-660

OPTIONAL EQUIPMENT

BELTING: Black rubber ruff-top; neoprene smooth top with 3/64" cover (black or white - specify); 3-ply friction surface (FS x FS)

CENTER DRIVE: Reversible drive with integral belt take-up of 24". Specify location.

SIDE MOUNTED END DRIVE: Provides minimum overall conveyor height of 9-1/2". Located on either side.

NOSE-OVER: Provides smooth transition from incline to horizontal position. Single nose-over adjusts 0-20"; double nose-over adjusts 0-35".

AUXILIARY TAKE-UP: Provides 24" of belt take-up. Specify location.

POWERED FEEDER: Integral belt feeder or separate belt feeder section driven by roller chain from tail pulley at lower end of inclined section.

BELT SPEED: 35-120 FPM, constant speed (specify). Other constant or variable speeds available. **NOTE: CAPACITY CHANGES WITH SPEED.**

MOTORS: Available through 3 HP with characteristics such as totally enclosed, single phase, etc.

FLOOR SUPPORTS: Other height supports (adjustable or fixed); also casted supports.

CEILING HANGERS: 5/8" dia. threaded rod with hardware to attach rods to conveyor. Provides 6' clearance between ceiling and TOB (furnished in place of floor supports).

ELECTRICAL CONTROLS: Manual start/stop push button switch; reversing drum switch; magnetic starter (one direction or reversible); limit switch; photo relay; others available.

LOAD CAPACITY @ 35 FPM				
HP	15" BF - 39" BF		45" BF - 57" BF	
	UP TO 50'	51' - 100'	UP TO 50'	51' - 100'
1	8500	6000	7107	3300
1-1/2	14600	11100	13202	9370
2	20700	17200	19300	15500
3	32900	29400	31400	27600

VARIABLE SPEED (guard removed for clarity)

