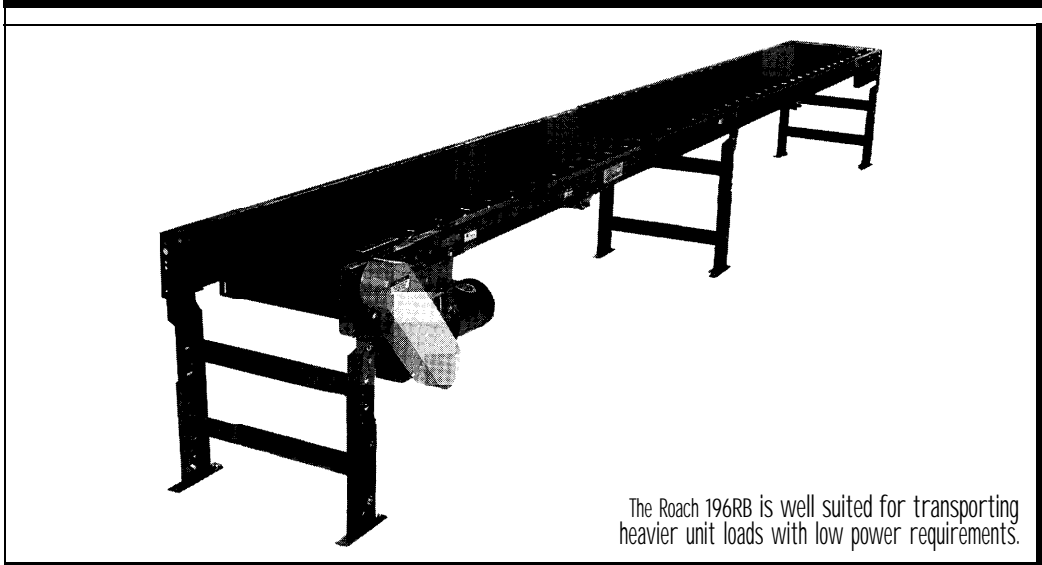


MODEL 196RB ROLLER BED BELT CONVEYOR

Roach sold by
mh-partners.com



The Roach 196RB is well suited for transporting heavier unit loads with low power requirements.

SPECIFICATIONS

BELTING: PVC- 120 black friction surface.

DRIVE PULLEY: 4" dia. with 1-3/16" dia. shaft or 8" dia. with 1-7/16" dia. shaft, both crowned and fully lagged.

TAIL PULLEY: 4" dia., crowned, with 1-3/16" dia. shaft.

END DRIVE: Allows one-direction (unit) operation; add optional center drive for reversible application.

TAKE-UP: Screw type unit at tail pulley provides 12" belt take-up.

BEARINGS: All pulley bearings are precision, heavy duty, lubricated, ball bearing units with cast iron housings.

BELT SPEED: 60 FPM, constant.

RETURN ROLLERS: 1.9" dia., adjustable.

BED: 3-1/2" x 1-1/2" x 10 ga. channel frame with 1.9" dia. x 16 ga. rollers.

Bed sections attached with couplings and floor supports.

SQUARING RODS: Adjustable rods on underside of bed allow frame to be squared for improved belt tracking and are standard on all units over 30'.

ROLLER CHAIN: Drive pulley is driven by No. 50 roller chain for 1-1/2 HP or less and No. 60 chain on larger drives. Chain take-up provided on motor base.

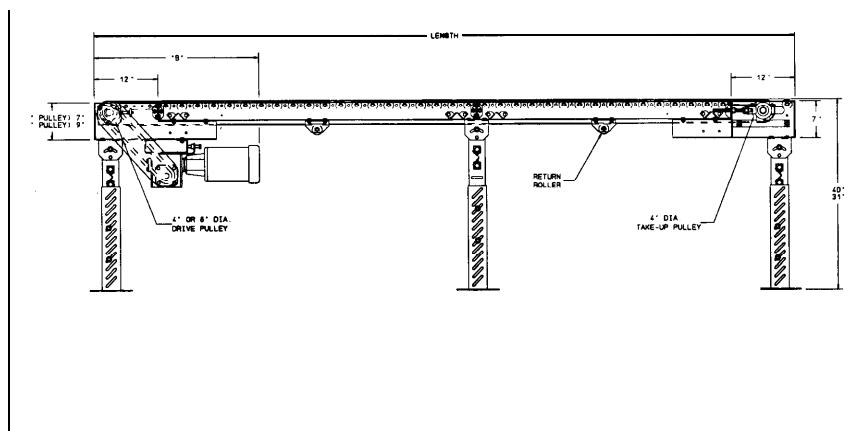
FLOOR SUPPORTS: 4" dia. drive pulley adjustable 31-1/2" to 40" TOB; 8" dia. drive pulley adjustable 33-1/2" to 40"; Supports provided at both ends and each bed joint. Supports can be lagged to floor.

MOTOR DRIVE: 1/3 HP, 230/460/3, 60 cycle, ODP right angle gear motor.

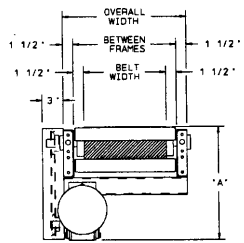
ELECTRICAL CONTROLS: Available as an option.

CAUTION: To prevent pinch points that exist when belt conveyors are permanently attached to other conveyors, use the connector brackets with safety pop out roller shown on page 147 (other stationary equipment will require proper guarding and safety devices supplied by others).

Indoff Distributor 860-632-2026



HP @ 60 FPM	REDUCER	"A"	"B"
1/3	RDW 13120-02	15 1 1/16"	33-7/32"
1/2	RDW13120-02	15 - 1 1/16"	33-7/32"
3/4	RDW13340-02	16-5/16"	34-5/16"
1	RDW13150-01	17-15/16"	34-5/8"
1-1/2	RDW13150-02	17-15/16"	34-5/8"
2	RDW13200-02	19-5/16"	36-5/16"



■ 24 hour shipment ■ 2 week shipment

SPECIFICATION TABLE

Up to 50'-0" will have a 4" dia. drive pulley, 5 1'-0" and over will have 8" dia. drive pulley

CONVEYOR LENGTH			5'	10'	15'	20'	25'	30'	40'	50'	60'	70'	80'	90'	100'
BELT	BF	OAW	Unit weights (lbs.) with 3" roller centers (For other centers, deduct weights below)												

12"	15"	18"	339	455	591	693	830	931	1169	1407	1645	1883	2121	2359	2598
18"	21"	24"	396	516	675	795	954	1074	1353	1632	1911	2190	2469	2748	3028
24"	27"	30"	443	595	712	934	1121	1273	1612	1951	2290	2629	2968	3307	3647
30"	33"	36"	481	663	875	1057	1269	1451	1841	2239	2633	3027	3421	3815	4210
36"	39"	42"	527	730	978	1183	1429	1636	2089	2542	3000	3448	3901	4354	4808

42"	45"	48"	574	832	1140	1398	1706	1964	2530	3101	3662	4228	4794	5360	5927
48"	5 1'		621	934	1302	1615	1983	2296	2977	3658	4339	5020	5701	6382	7064

Deduct the following weights (lbs.) for other than 3" centers

ROLLER CENTERS	12" BELT		18" BELT		24" BELT		30" BELT		36" BELT		42" BELT		48" BELT	
	Per 5'	Per 10'	Per 5'	Per 10'	Per 5'	Per 10'	Per 5'	Per 10'	Per 5'	Per 10'	Per 5'	Per 10'	Per 5'	Per 10'
4 1/2"	-15	-30	-20	-40	-25	-50	-30	-60	-35	-70	-40	-80	-45	-90
6"	-30	-60	-40	-80	-50	-100	-60	-120	-70	-140	-80	-160	-90	-180
9"	-42	-78	-56	-104	-70	-130	-84	-156	-98	-182	-112	-208	-126	-234
12"	-45	-90	-60	-120	-75	-150	-90	-180	-105	-210	-120	-240	-135	-270

OPTIONAL EQUIPMENT

BELTING: Black rubber ruff -top; neoprene smooth top with cover (black or white - specify); 3-ply friction surface (FS x FS).

CENTER DRIVE: Reversible drive with integral belt take-up of 24". Specify location.

SIDE MOUNTED END DRIVE: Provides minimum overall conveyor height of 7-1/2". Located on either side.

AUXILIARY TAKE-UP: Provides 24" of belt take-up. Specify location.

POWERED FEEDER: Integral belt feeder or separate belt feeder section driven by roller chain from tail pulley at lower end of inclined section.

NOSE-OVER: Provides smooth transition from incline to horizontal position. Single nose-over adjusts 0-20*; double nose-over adjusts 0-35*. degrees*

FLOOR SUPPORTS: Other height supports available (adjustable or fixed); also casted supports.

CEILING HANGERS: 5/8" dia. threaded rod with hardware to attach rods to conveyor. Provides 6' clearance between ceiling and TOB (furnished in place of floor supports).

BELT SPEED: 35 120 FPM, constant speed (specify). Other constant or variable speeds available. NOTE: CAPACITY CHANGES WITH SPEED.

MOTORS: Available through 2 HP with characteristics such as totally enclosed, single phase, etc.

ELECTRICAL CONTROLS: Manual start/stop push button switch; reversing drum switch; magnetic starter (one direction or reversible); limit switch; photo relay; others available.

LOAD CAPACITY @ 60 FPM			
HP	TOTAL CAPACITY	HP	TOTAL CAPACITY
1/3	1000	1	2500
1/2	1300	1-1/2	3300
3/4	2000	2	3900

2.8:1 VARIABLE SPEED (guard removed for clarity)

