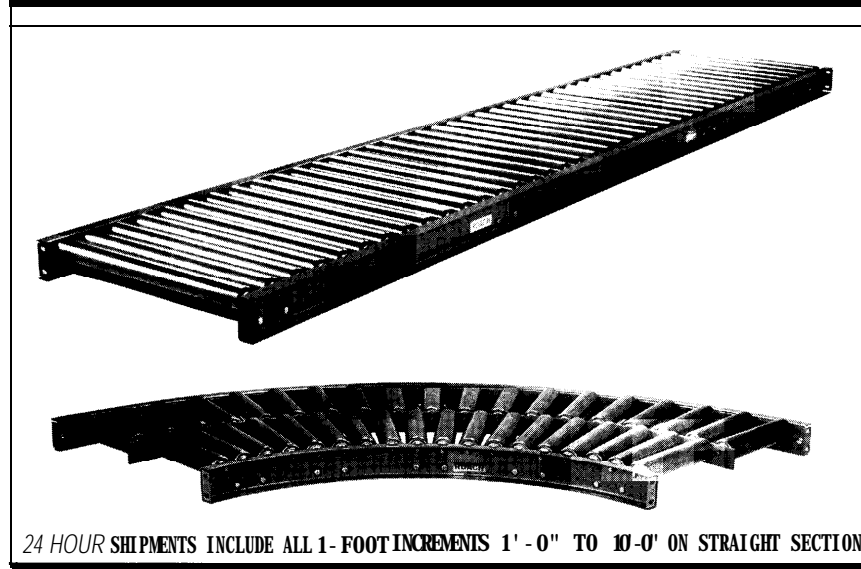


MODEL 192s 1.9" DIA. X 12 GA. GRAVITY ROLLER CONVEYOR



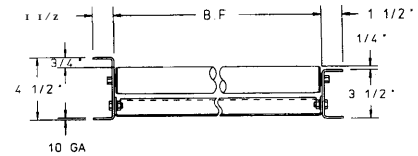
MODEL NO. EXPLANATION

192s* -- 13 -- 3** -- H -- 7
 roller no. | | high/low |

BF RC length/degree

*Specify 192SC for curved sections.

**Centers not required for curved sections.



SPECIFICATIONS

ROLLERS: 1.9" x 12 ga. steel tubing with smooth swaged ends.

FRAMES: Formed steel channel 3-1/2" x 1-1/2" x 10 ga. with butt couplings.

BEARINGS: Integral labyrinth sealed ball bearings, zinc plated, grease packed.

AXLES: 7/16" hex shaft, spring loaded.

CAPACITY: 260 lbs. per roller, or 1300 lbs. maximum distributed live load per 10' section with supports at 10' centers; 3200 lbs. at 5' centers.

STRAIGHT SECTIONS

nom. rlr length BF		UNIT WEIGHTS (lbs.)									
		3" RC		4 1/2" RC		6" RC		9" RC		12" RC	
nom. rlr	length BF	10'	5'	10'	5'	10'	5'	10'	5'	10'	5'
12"	13"	200	101	165	85	134	68	114	58	101	52
14"	15"	217	109	181	92	144	74	122	62	107	55
16"	17"	234	118	193	97	152	77	128	64	111	56
18"	19"	252	127	206	105	162	82	134	69	115	60
20"	21"	271	136	221	111	171	87	139	70	120	61
22"	23"	289	146	235	119	180	91	146	74	125	63
24"	25"	306	155	234	123	189	95	152	76	129	66
26"	27"	325	164	261	132	198	100	159	80	134	68
30"	31"	358	181	287	145	215	109	171	87	143	73
32"	33"	379	191	302	152	224	113	178	91	147	75
36"	37"	415	209	331	167	242	122	189	96	156	80
38"	39"	433	218	343	173	252	128	196	100	161	82
42"	43"	469	236	370	187	270	137	209	106	170	87
46"	47"	505	254	398	200	288	146	221	113	179	91
50"	51"	541	272	425	214	307	156	234	119	189	96

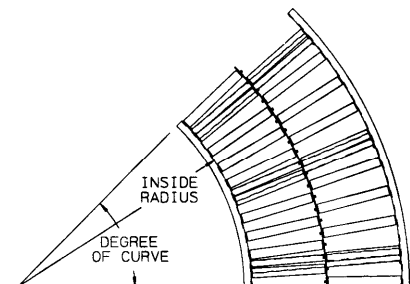
OPTIONAL: 4" at 5.4 lbs. structural steel channel frame, rollers 3/16" high.

CAUTION: To prevent pinch points that exist when gravity conveyors are permanently attached to power conveyors, use the connector brackets with safety pop-out rollers shown on page 147.

Indoff Distributor 860-632-2026

CURVED SECTIONS

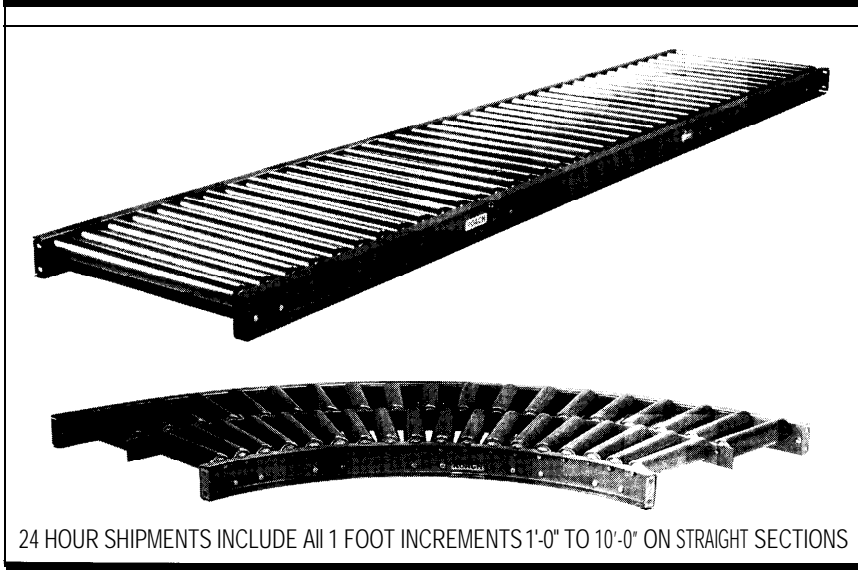
UNIT --			90* degrees			45* degrees		
NOM RLR LENGTH	BF	INSIDE RADIUS	ROLLERS PER CURVE	ROLLER PATTERN	WEIGHT (LBS.)	ROLLERS PER CURVE	ROLLER PATTERN	WEIGHT (LBS.)
12"	13"	2'-8 1/2"	22	SINGLE	115	11	SINGLE	60
14"	15"	2'-8 1/2"	22	SINGLE	126	11	SINGLE	65
16"	17"	2'-8 1/2"	22	SINGLE	137	11	SINGLE	71
18"	19"	2'-8 1/2"	22	SINGLE	149	11	SINGLE	78
20"	21"	2'-8 1/2"	22	SINGLE	161	11	SINGLE	83
22"	23"	2'-8 1/2"	41	DOUBLE	191	21	DOUBLE	98
24"	25"	2'-8 1/2"	41	DOUBLE	201	21	DOUBLE	103
26"	27"	2'-8 1/2"	41	DOUBLE	212	21	DOUBLE	108
30"	31"	4'-0"	40	DOUBLE	2	20	DOUBLE	129
32"	33"	4'-0"	40	DOUBLE	265	20	DOUBLE	135
36"	37"	4'-0"	40	DOUBLE	288	20	DOUBLE	146
38"	39"	4'-0"	40	DOUBLE	300	20	DOUBLE	152
42"	43"	4'-0"	40	DOUBLE	324	20	DOUBLE	164
46"	47"	4'-0"	40	DOUBLE	347	20	DOUBLE	175
50"	51"	4'-0"	40	DOUBLE	371	20	DOUBLE	187



24 hour shipment



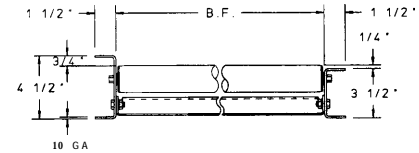
MODEL 199s 1.9" DIA. X 9 GA. GRAVITY ROLLER CONVEYOR



MODEL NO. EXPLANATION

199S* -- 13 -- 3** -- H -- 7
 roller no. | | high/low |
 BF RC length/degree

*Specify " 199SC" for curved sections.
 **Centers not required for curved sections.



SPECIFICATIONS

ROLLERS: 1.9" x 9 ga. steel tubing with straight ends reamed to provide smooth bearing seats.

FRAMES: Formed steel channel 3-1/2" x 1-1/2" x 10 ga. with butt couplings.

BEARINGS: Integral plain ball bearings, zinc plated, grease packed.

AXLES: 7/16" hex shaft, spring loaded.

CAPACITY: 300 lbs. per roller, or 1300 lbs. maximum distributed live load per 10' section with supports at 10' centers; 3200 lbs. at 5' centers.

STRAIGHT SECTIONS

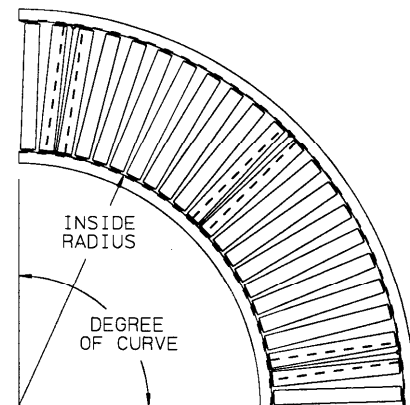
NOM. RLR. LENGTH	BF	UNH WEIGHTS									
		3" RC		4 1/2" RC		6" RC		9" RC		12" RC	
		10'	5'	10'	5'	10'	5'	10'	5'	10'	5'
12"	13"	220	113	170	87	143	75	117	64	105	56
14"	15"	244	126	179	95	156	82	126	69	112	60
16"	17"	267	139	203	104	169	89	134	74	119	64
18"	19"	292	151	220	112	182	96	143	79	127	68
20"	21"	313	161	235	119	193	101	151	83	133	71
22"	23"	340	175	254	129	207	109	161	89	141	79
24"	25"	363	187	270	137	219	116	169	94	148	80
26"	27"	387	200	287	146	232	122	178	W	155	84
30"	31"	433	224	319	162	257	135	195	109	169	91
32"	33"	460	237	337	171	271	143	205	115	177	96
36"	37"	506	261	369	188	296	156	222	125	191	104
38"	39"	528	272	384	195	307	162	229	129	196	107
42"	43"	575	297	417	212	332	176	246	139	210	115
46"	47"	623	321	450	228	358	189	264	149	224	123
50"	51"	670	346	483	245	383	202	281	159	238	131

OPTIONAL: 4" at 5.4 lbs. structural steel channel frame, rollers 3/16" high.

CAUTION: To prevent pinch points that exist when gravity conveyors are permanently attached to power conveyors, use the connector brackets with safety pop-out rollers shown on page 147.

CURVED SECTIONS

UNIT			90°			45°		
NOM. RLR. LENGTH	BF	INSIDE RADIUS	ROLLERS PERCURVE	ROLLER PATTERN	WEIGHT (lbs.)	ROLLERS PERCURVE	ROLLER PATTERN	WEIGHT (lbs.)
12"	13"	2'-8 1/2"	22	SINGLE	96	11	SINGLE	53
14"	15"	2'-8 1/2"	22	SINGLE	106	11	SINGLE	59
16"	17"	2'-8 1/2"	22	SINGLE	115	11	SINGLE	62
18"	19"	2'-8 1/2"	22	SINGLE	127	11	SINGLE	68
20"	21"	2'-8 1/2"	22	SINGLE	158	11	SINGLE	71
22"	23"	2'-8 1/2"	41	DOUBLE	168	21	DOUBLE	86
24"	25"	2'-8 1/2"	41	DOUBLE	191	21	DOUBLE	90
26"	27"	2'-8 1/2"	41	DOUBLE	194	21	DOUBLE	95
30"	31"	4'-0"	40	DOUBLE	328	20	DOUBLE	114
32"	33"	4'-0"	40	DOUBLE	337	20	DOUBLE	118
36"	37"	4'-0"	40	DOUBLE	357	20	DOUBLE	128
38"	39"	4'-0"	40	DOUBLE	396	20	DOUBLE	133
42"	43"	4'-0"	40	DOUBLE	430	20	DOUBLE	143
46"	47"	4'-0"	40	DOUBLE	464	20	DOUBLE	153
50"	51"	4'-0"	40	DOUBLE	498	20	DOUBLE	164



24 hour shipment