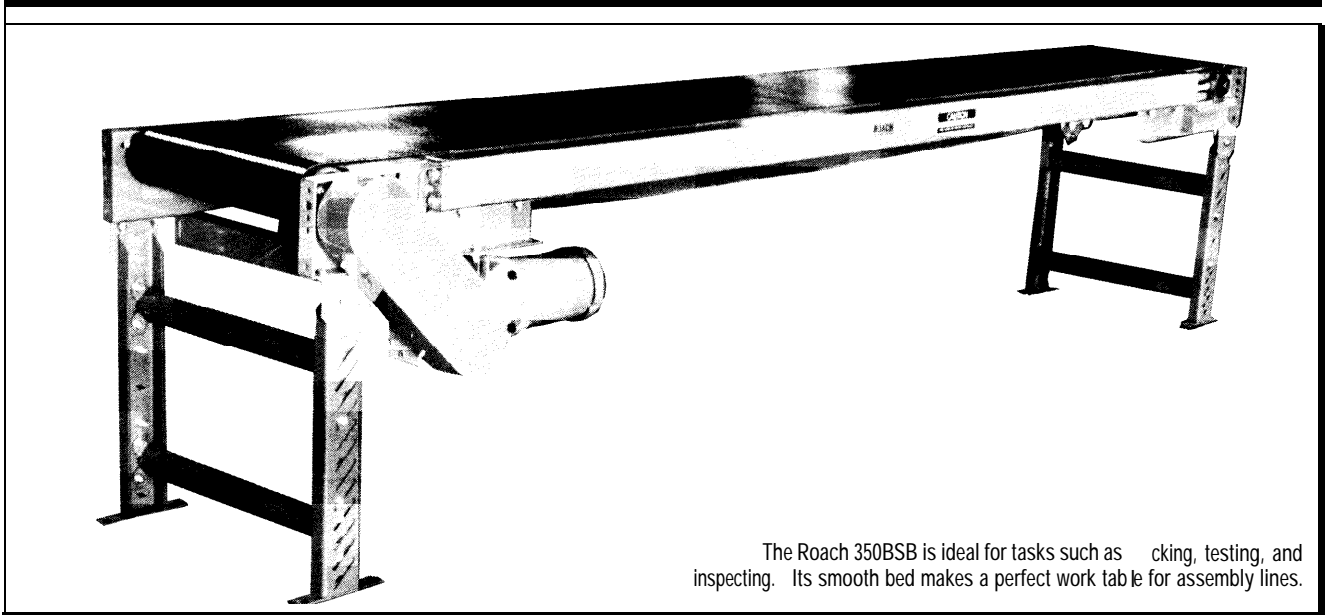


MODEL 350BSB BOX STYLE SLIDER BED BELT CONVEYOR



The Roach 350BSB is ideal for tasks such as picking, testing, and inspecting. Its smooth bed makes a perfect work table for assembly lines.

SPECIFICATIONS

BELTING: PVC-I 20 black friction surface.

DRIVE PULLEY: 4" dia. with 1-3/16" dia. shaft or 8" dia. with 1-7/16" dia. shaft, both crowned and fully lagged.

TAIL PULLEY: 4" dia., crowned, with 1-3/16" dia. shaft.

END DRIVE: Allows one-direction (unit) operation; add optional center drive for reversible application.

TAKE-UP: Screw type unit at tail pulley provides 12" belt take-up.

BED: 3-5/8" deep x 12 ga. box type construction.

BEARINGS: All pulley bearings are precision, heavy duty, lubricated, ball bearing units with cast iron housings.

BELT SPEED: 60 FPM, constant.

RETURN ROLLERS: 1.9" dia., adjustable.

FLOOR SUPPORTS: 4" dia. drive pulley adjustable 31-1/2" to 40" TOB; 8" dia. drive pulley adjustable 33-1/2" to 40". Supports provided at both ends and each bed joint. Supports can be lagged to floor.

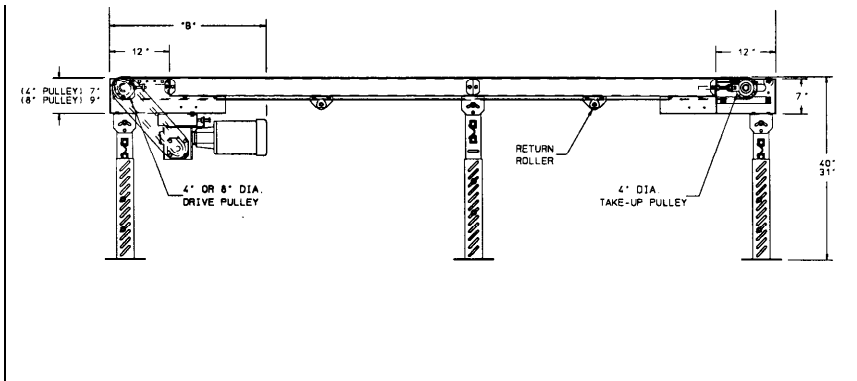
MOTOR DRIVE: 1/3 HP, 230/460/3, 60 cycle, ODP right angle gear motor.

ROLLER CHAIN: Drive pulley is driven by No. 50 roller chain for 1-1/2 HP or less and No. 60 chain on larger drives. Chain take-up provided on motor base.

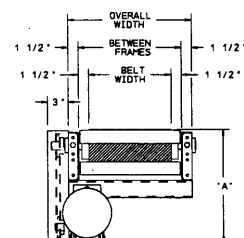
ELECTRICAL CONTROLS: Available as an option.

CAUTION: To prevent pinch points that exist when belt conveyors are permanently attached to other conveyors, use connector brackets with safety pop out roller shown on page 147 (other stationary equipment will require proper guarding and safety devices supplied by others).

Indoff Distributor mh-partners.com



HP @ 60 FPM	REDUCER	"A"	"B"
1/3	RDW 13120-02	15 11/16"	33-7/32"
1/2	RDW13120-02	15 - 11/16"	33-7/32"
3/4	RDW13340-02	16-5/16"	34-5/16"
1	RDW13150-01	17-15/16"	34-5/8"
1-1/2	RDW13150-02	17-15/16"	34-5/8"
2	RDW13200-02	19-5/16"	36 - 5/16"



SPECIFICATION TABLE

Up to 50'-0" will have a 4" dia. drive pulley, 51'-0" and over will have an 8" dia. drive pulley

CONVEYOR LENGTH	5'	10'	15'	20'	25'	30'	35'	40'	50'	60'	70'	80'	90'	100'
BELT OAW	Unit weights (lbs.)													
6" 12"	238	253	293	307	344	359	395	411	466	519	572	624	676	728
12" 18"	265	293	346	375	428	456	509	537	625	707	790	871	952	1034
18" 24"	314	369	450	505	586	640	722	777	923	1059	1207	1333	1468	1605
24" 30"	369	429	512	582	679	748	845	914	1093	1250	1430	1595	1762	1928
30" 36"	398	447	555	634	752	821	925	1008	1211	1378	1588	1774	1963	2150
36" 42"	438	496	621	716	854	937	1058	1157	1397	1593	1842	2062	2285	2506

OPTIONAL EQUIPMENT

BELTING: Black rubber ruff -top; neoprene smooth top with 3/64" cover (black or white - specify); 3-ply friction surface (FS x FS).

CENTER DRIVE: Reversible drive with integral belt take-up of 24". Specify location.

SIDE MOUNTED END DRIVE: Provides minimum overall conveyor height of 7-1/2". Located on either side.

OVERHEAD END DRIVE: Provides minimum overall conveyor height of 7-1/2" (minimizes width). Specify clearance above belt.

AUXILIARY TAKE-UP: Provides 24" of belt take-up. Specify location.

NOSE-OVER: Provides smooth transition from incline to horizontal position. Single nose-over adjusts 0-20"; double nose-over adjusts 0-35". Feeders also available.

UNDERTRUSSED BED: Available to provide clearance underneath unit at bed joint locations. Specify location for undertrussing and desired clearance underneath unit.

SIDE TABLES: Available in 9", 15" and 21" widths (14 ga.) one or both sides.

FLOOR SUPPORTS: Other height supports (adjustable or fixed); also castered supports.

CEILING HANGERS: 5/8" dia. threaded rod with hardware to attach rods to conveyor. Provides 6' clearance between ceiling and TOB (furnished in place of floor supports).

GUARD RAILS: 1-3/4" x 1" formed channel, adjusts horizontally to 10" wider than belt and vertically to 6" above belt.

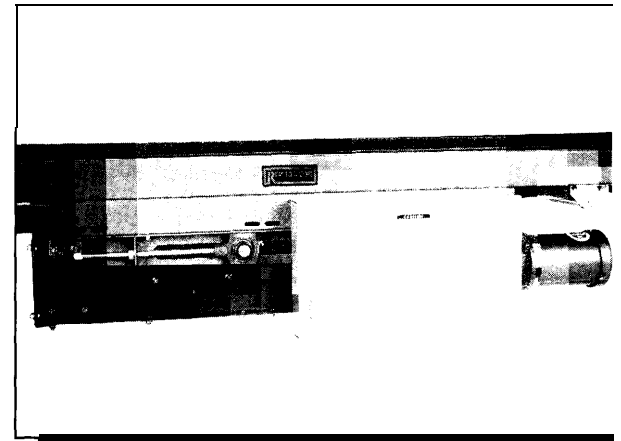
BELT SPEED: 35 120 FPM, constant speed (specify). Other constant or variable speeds available. **NOTE: CAPACITY CHANGES WITH SPEED.**

MOTORS: Available through 2 HP with characteristics such as totally enclosed, single phase, etc.

ELECTRICAL CONTROLS: Manual start/stop push button switch; reversing drum switch; magnetic starter (one direction or reversible); limit switch; photo relay; others available.

LOADCAPACITY		60FPM	
HP	TOTAL CAPACITY	HP	TOTAL CAPACITY
1/3	300	1	725
1/2	400	1-1/2	1100
3/4	575	2	1300

CENTER DRIVE



ADJUSTABLE CHANNEL GUARD RAIL

